



UniStrip G4

BCP381 12LED 30K 24V A2 L50 DMX

UniStrip G4 - 831 lm - 12 W - 3000 K

UniStrip G4 is a surface mounted, exterior-rated LED luminaire that is designed for façade and outdoor architectural lighting applications.;One family that fits all your needs, wall washing, grazing and also linear flood lighting.;The robust mechanical and unique optical designs make it ideal for illuminating buildings facades, bridges, overpasses and any application that requires a linear lighting solution.;Available in white, monochromatic colors, RGB, RGBW and tunable white and DMX control option available with up to 8 pixels (8IDs) to give architects and designers the freedom to explore a wide range of concepts and design with no limitations.

Warnings and Safety

- For outdoor use only

Product data

| General information | | Serviceability class | |
|-----------------------------|---|--|-------------------|
| Light source color | Warm white | Class B, luminaire is equipped with some serviceable parts (when applicable): driver, control units, surge protection device, front cover and mechanical parts | |
| Light source replaceable | No | Operating and electrical | |
| Driver included | No | Input Voltage | 24 DC V |
| Optical cover/lens type | Clear flat | Input Frequency | - Hz |
| Luminaire light beam spread | 16° x 35° | Power Factor (Min) | 0.9 |
| Control interface | Dynamix DMX | Controls and dimming | |
| Connection | 2 Push-in connector 5-pole | Dimmable | Yes |
| Cable | 2 cables 0.15m with connectors 5-pole | Mechanical and housing | |
| Protection class IEC | Safety class III | Housing Material | Aluminum extruded |
| Flammability mark | For mounting on normally flammable surfaces | | |
| CE mark | CE mark | | |
| Light source engine type | LED | | |

UniStrip G4

| | |
|-----------------------------|-----------------------------|
| Optic material | Polymethyl methacrylate |
| Optical cover/lens material | Tempered glass |
| Fixation material | Aluminum |
| Mounting device | Mounting bracket adjustable |
| Optical cover/lens finish | Clear |
| Overall length | 500 mm |
| Overall width | 38 mm |
| Overall height | 47 mm |
| Color | Dark gray |

Approval and application

| | |
|------------------------------|---|
| Ingress protection code | IP66 [Dust penetration-protected, jet-proof] |
| Mech. impact protection code | IK06 [1 J] |

Initial performance (IEC compliant)

| | |
|-------------------------------------|---------|
| Initial luminous flux (system flux) | 831 lm |
| Luminous flux tolerance | +/-10% |
| Initial LED luminaire efficacy | 69 lm/W |
| Init. Corr. Color Temperature | 3000 K |
| Init. Color Rendering Index | 80 |

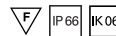
| | |
|-----------------------------|--------|
| Initial chromaticity | 4 SDCM |
| Initial input power | 12 W |
| Power consumption tolerance | +/-10% |

Application conditions

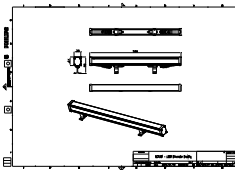
| | |
|---------------------------|---------------|
| Ambient temperature range | -40 to +50 °C |
|---------------------------|---------------|

Product data

| | |
|---------------------------------|---------------------------------|
| Full product code | 871951494449799 |
| Order product name | BCP381 12LED 30K 24V A2 L50 DMX |
| EAN/UPC - Product | 8719514944497 |
| Order code | 911401738652 |
| Numerator - Quantity Per Pack | 1 |
| Numerator - Packs per outer box | 15 |
| Material Nr. (12NC) | 911401738652 |
| Copy Net Weight (Piece) | 0.829 kg |



Dimensional drawing



BCP381 12LED 30K 24V A2 L50 DMX

