

UniStrip G4

BCP381 24LED 27K 24V 40 L100

UniStrip G4 - 1651 lm - 24 W - 2700 K

UniStrip G4 is a surface mounted, exterior-rated LED luminaire that is designed for façade and outdoor architectural lighting applications.;One family that fits all your needs, wall washing, grazing and also linear flood lighting.;The robust mechanical and unique optical designs make it ideal for illuminating buildings facades, bridges, overpasses and any application that requires a linear lighting solution.;Available in white, monochromatic colors, RGB, RGBW and tunable white and DMX control option available with up to 8 pixels (8IDs) to give architects and designers the freedom to explore a wide range of concepts and design with no limitations.

Warnings and Safety

- For outdoor use only

Product data

General information		Serviceability class	
Light source color	Warm white	Class B, luminaire is equipped with some serviceable parts (when applicable): driver, control units, surge protection device, front cover and mechanical parts	
Light source replaceable	No	Operating and electrical	
Driver included	No	Input Voltage	24 DC V
Optical cover/lens type	Clear flat	Input Frequency	- Hz
Luminaire light beam spread	40° x 40°	Power Factor (Min)	0.9
Control interface	-	Controls and dimming	
Connection	2 Push-in connector 2-pole	Dimmable	No
Cable	2 cables 0.15m with connectors 2-pole	Mechanical and housing	
Protection class IEC	Safety class III	Housing Material	Aluminum extruded
Flammability mark	For mounting on normally flammable surfaces		
CE mark	CE mark		
Light source engine type	LED		

UniStrip G4

Optic material	Polymethyl methacrylate
Optical cover/lens material	Tempered glass
Fixation material	Aluminum
Mounting device	Mounting bracket adjustable
Optical cover/lens finish	Clear
Overall length	1000 mm
Overall width	38 mm
Overall height	47 mm
Color	Dark gray

Approval and application

Ingress protection code	IP66 [Dust penetration-protected, jet-proof]
Mech. impact protection code	IK06 [1 J]

Initial performance (IEC compliant)

Initial luminous flux (system flux)	1651 lm
Luminous flux tolerance	+/-10%
Initial LED luminaire efficacy	69 lm/W
Init. Corr. Color Temperature	2700 K

Init. Color Rendering Index	80
Initial chromaticity	4 SDCM
Initial input power	24 W
Power consumption tolerance	+/-10%

Application conditions

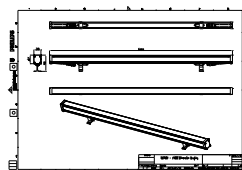
Ambient temperature range	-40 to +50 °C
---------------------------	---------------

Product data

Full product code	911401738782
Order product name	BCP381 24LED 27K 24V 40 L100
Order code	911401738782
Numerator - Quantity Per Pack	1
Numerator - Packs per outer box	15
Material Nr. (12NC)	911401738782
Copy Net Weight (Piece)	1.449 kg



Dimensional drawing



BCP381 24LED 27K 24V 40 L100

