



UniStrip G4

BCP382 24LED RGBNW 24V 30 L100 DMX

UniStrip G4 - 1306 lm - 36 W - -

UniStrip G4 is a surface mounted, exterior-rated LED luminaire that is designed for façade and outdoor architectural lighting applications.;One family that fits all your needs, wall washing, grazing and also linear flood lighting.;The robust mechanical and unique optical designs make it ideal for illuminating buildings facades, bridges, overpasses and any application that requires a linear lighting solution.;Available in white, monochromatic colors, RGB, RGBW and tunable white and DMX control option available with up to 8 pixels (8IDs) to give architects and designers the freedom to explore a wide range of concepts and design with no limitations.

Warnings and Safety

- For outdoor use only

Product data

General information	
Light source color	Red, green, blue and white
Light source replaceable	No
Driver included	No
Optical cover/lens type	Clear flat
Luminaire light beam spread	30° x 30°
Control interface	Dynamic DMX
Connection	2 Push-in connector 5-pole
Cable	2 cables 0.15m with connectors 5-pole
Protection class IEC	Safety class III
Flammability mark	For mounting on normally flammable surfaces
CE mark	CE mark
Light source engine type	LED

Serviceability class	Class B, luminaire is equipped with some serviceable parts (when applicable): driver, control units, surge protection device, front cover and mechanical parts
----------------------	--

Operating and electrical	
Input Voltage	24 DC V
Input Frequency	- Hz
Power Factor (Min)	0.9

Controls and dimming	
Dimmable	Yes

UniStrip G4

Mechanical and housing

Housing Material	Aluminum extruded
Optic material	Polymethyl methacrylate
Optical cover/lens material	Tempered glass
Fixation material	Aluminum
Mounting device	Mounting bracket adjustable
Optical cover/lens finish	Clear
Overall length	1000 mm
Overall width	38 mm
Overall height	47 mm
Color	Dark gray
Dimensions (Height x Width x Depth)	47 x 38 x 1000 mm

Approval and application

Ingress protection code	IP66 [Dust penetration-protected, jet-proof]
Mech. impact protection code	IK06 [1 J]

Initial performance (IEC compliant)

Initial luminous flux (system flux)	1306 lm
Luminous flux tolerance	+/-10%
Initial LED luminaire efficacy	36 lm/W

Init. Corr. Color Temperature	-
Init. Color Rendering Index	-
Initial input power	36 W
Power consumption tolerance	+/-10%

Application conditions

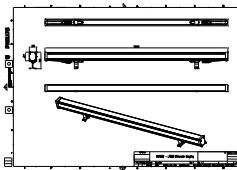
Ambient temperature range	-40 to +50 °C
---------------------------	---------------

Product data

Full product code	871951494483199
Order product name	BCP382 24LED RGBNW 24V 30 L100 DMX
EAN/UPC - Product	8719514944831
Order code	911401739332
Numerator - Quantity Per Pack	1
Numerator - Packs per outer box	15
Material Nr. (12NC)	911401739332
Net Weight (Piece)	1.466 kg



Dimensional drawing



BCP382 24LED RGBNW 24V 30 L100 DMX

