



UniStrip G4

BCP383 12LED 27K 220V 45 L50 D2

UniStrip G4 - 1426 lm - 27 W - -

UniStrip G4 is a surface mounted, exterior-rated LED luminaire that is designed for façade and outdoor architectural lighting applications. One family that fits all your needs, wall washing, grazing and also linear flood lighting. The robust mechanical and unique optical designs make it ideal for illuminating buildings facades, bridges, overpasses and any application that requires a linear lighting solution. Available in white, monochromatic colors, RGB, RGBW and tunable white and DMX control option available with up to 8 pixels (8IDs) to give architects and designers the freedom to explore a wide range of concepts and design with no limitations.

Warnings and Safety

- For outdoor use only

Product data

General information		Inrush current	60 A
Light source color	Warm white	Power Factor (Min)	0.9
Driver included	Yes	Controls and dimming	
Optical cover/lens type	Tempered glass	Dimmable	No
Control interface	-	Mechanical and housing	
Connection	Flying leads/wires	Housing Material	Aluminum extruded
Cable	Cable 0.3 m without plug 3-pole	Optical cover/lens material	Polymethyl methacrylate
Protection class IEC	Safety class I	Effective projected area	0.073 m ²
Flammability mark	For mounting on normally flammable surfaces	Color	Dark gray
CE mark	CE mark	Dimensions (Height x Width x Depth)	NaN x NaN x NaN mm
Operating and electrical			
Input Voltage	220 to 240 V		
Input Frequency	50 to 60 Hz		

UniStrip G4

Approval and application

Ingress protection code	IP66 [Dust penetration-protected, jet-proof]
Mech. impact protection code	IK06 [1 J]

Initial performance (IEC compliant)

Initial luminous flux (system flux)	1426 lm
Luminous flux tolerance	+/-10%
Initial LED luminaire efficacy	53 lm/W
Init. Corr. Color Temperature	-
Init. Color Rendering Index	80
Initial chromaticity	SDCM = 4
Initial input power	27 W
Power consumption tolerance	+/-10%

Application conditions

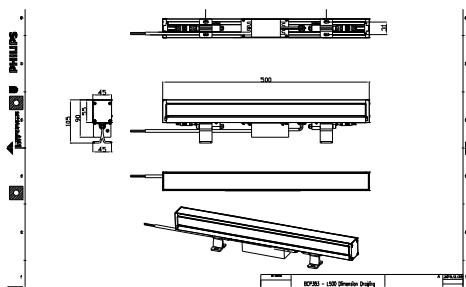
Ambient temperature range	-40 to +50 °C
---------------------------	---------------

Product data

Full product code	871951492160399
Order product name	BCP383 12LED 27K 220V 45 L50 D2
EAN/UPC - Product	8719514921603
Order code	911401736013
Numerator - Quantity Per Pack	1
Numerator - Packs per outer box	6
Material Nr. (12NC)	911401736013
Net Weight (Piece)	1.799 kg



Dimensional drawing



BCP383 12LED 27K 220V 45 L50 D2

