



# UniStrip G4

BCP383 12LED 27K 220V A2 L50 D2

UniStrip G4 - 1184 lm - 27 W - 2700 K

UniStrip G4 is a surface mounted, exterior-rated LED luminaire that is designed for façade and outdoor architectural lighting applications. One family that fits all your needs, wall washing, grazing and also linear flood lighting. The robust mechanical and unique optical designs make it ideal for illuminating buildings facades, bridges, overpasses and any application that requires a linear lighting solution. Available in white, monochromatic colors, RGB, RGBW and tunable white and DMX control option available with up to 8 pixels (8IDs) to give architects and designers the freedom to explore a wide range of concepts and design with no limitations.

## Warnings and Safety

- For outdoor use only

## Product data

General information		Inrush current	
Light source color	Warm white	Inrush current	60 A
Driver included	Yes	Power Factor (Min)	0.9
Optical cover/lens type	Tempered glass	Controls and dimming	
Control interface	-	Dimmable	No
Connection	Flying leads/wires	Mechanical and housing	
Cable	Cable 0.3 m without plug 3-pole	Housing Material	Aluminum extruded
Protection class IEC	Safety class I	Optical cover/lens material	Polymethyl methacrylate
Flammability mark	For mounting on normally flammable surfaces	Effective projected area	0.073 m <sup>2</sup>
CE mark	CE mark	Color	Dark gray
Operating and electrical		Dimensions (Height x Width x Depth)	NaN x NaN x NaN mm
Input Voltage	220 to 240 V		
Input Frequency	50 to 60 Hz		

# UniStrip G4

## Approval and application

Ingress protection code	IP66 [ Dust penetration-protected, jet-proof]
Mech. impact protection code	IK06 [ 1 J]

## Initial performance (IEC compliant)

Initial luminous flux (system flux)	1184 lm
Luminous flux tolerance	+/-10%
Initial LED luminaire efficacy	44 lm/W
Init. Corr. Color Temperature	2700 K
Init. Color Rendering Index	80
Initial chromaticity	SDCM = 4
Initial input power	27 W
Power consumption tolerance	+/-10%

## Application conditions

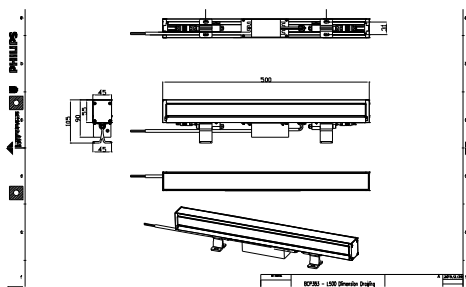
Ambient temperature range	-40 to +50 °C
---------------------------	---------------

## Product data

Full product code	871951492158099
Order product name	BCP383 12LED 27K 220V A2 L50 D2
EAN/UPC - Product	8719514921580
Order code	911401735993
Numerator - Quantity Per Pack	1
Numerator - Packs per outer box	6
Material Nr. (12NC)	911401735993
Net Weight (Piece)	1.799 kg



## Dimensional drawing



BCP383 12LED 27K 220V A2 L50 D2

