



UniStrip G4

BCP383 24LED 27K 220V A2 L100 DMX D2

UniStrip G4 - 2298 lm - 50 W - -

UniStrip G4 is a surface mounted, exterior-rated LED luminaire that is designed for façade and outdoor architectural lighting applications.;One family that fits all your needs, wall washing, grazing and also linear flood lighting.;The robust mechanical and unique optical designs make it ideal for illuminating buildings facades, bridges, overpasses and any application that requires a linear lighting solution.;Available in white, monochromatic colors, RGB, RGBW and tunable white and DMX control option available with up to 8 pixels (8IDs) to give architects and designers the freedom to explore a wide range of concepts and design with no limitations.

Warnings and Safety

- For outdoor use only

Product data

General information	
Light source color	Warm white
Driver included	Yes
Optical cover/lens type	Tempered glass
Control interface	Dynamix DMX
Connection	Flying leads/wires and 2 Push-in connector 4-pole
Cable	Cable 0.3 m without plug 3-pole + 2 Cables 0.3 m with connector 4-pole
Protection class IEC	Safety class I
Flammability mark	For mounting on normally flammable surfaces
CE mark	CE mark

Operating and electrical	
Input Voltage	220 to 240 V
Input Frequency	50 to 60 Hz
Inrush current	60 A
Power Factor (Min)	0.9

Controls and dimming	
Dimmable	Yes

Mechanical and housing	
Housing Material	Aluminum extruded
Optical cover/lens material	Polymethyl methacrylate
Effective projected area	0.073 m ²
Color	Dark gray

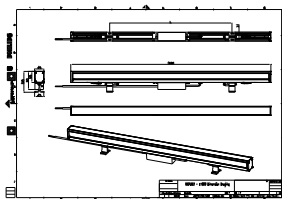
UniStrip G4

Dimensions (Height x Width x Depth)	NaN x NaN x NaN mm
Approval and application	
Ingress protection code	IP66 [Dust penetration-protected, jet-proof]
Mech. impact protection code	IK06 [1 J]
Initial performance (IEC compliant)	
Initial luminous flux (system flux)	2298 lm
Luminous flux tolerance	+/-10%
Initial LED luminaire efficacy	46 lm/W
Init. Corr. Color Temperature	-
Init. Color Rendering Index	80
Initial chromaticity	SDCM = 4
Initial input power	50 W
Power consumption tolerance	+/-10%

Application conditions	
Ambient temperature range	-40 to +50 °C
Product data	
Full product code	871951492173399
Order product name	BCP383 24LED 27K 220V A2 L100 DMX D2
EAN/UPC - Product	8719514921733
Order code	911401736143
Numerator - Quantity Per Pack	1
Numerator - Packs per outer box	6
Material Nr. (12NC)	911401736143
Net Weight (Piece)	3.199 kg



Dimensional drawing



BCP383 24LED 27K 220V A2 L100 DMX D2

