



UniStrip G4

BCP383 6LED 27K 220V A2 L30 D2

UniStrip G4 - 598 lm - 15 W - -

UniStrip G4 is a surface mounted, exterior-rated LED luminaire that is designed for façade and outdoor architectural lighting applications.;One family that fits all your needs, wall washing, grazing and also linear flood lighting.;The robust mechanical and unique optical designs make it ideal for illuminating buildings facades, bridges, overpasses and any application that requires a linear lighting solution.;Available in white, monochromatic colors, RGB, RGBW and tunable white and DMX control option available with up to 8 pixels (8IDs) to give architects and designers the freedom to explore a wide range of concepts and design with no limitations.

Warnings and Safety

- For outdoor use only

Product data

General information		Inrush current	
Light source color	Warm white		60 A
Driver included	Yes	Power Factor (Min)	0.9
Optical cover/lens type	Tempered glass	Controls and dimming	
Control interface	-	Dimmable	No
Connection	Flying leads/wires	Mechanical and housing	
Cable	Cable 0.3 m without plug 3-pole	Housing Material	Aluminum extruded
Protection class IEC	Safety class I	Optical cover/lens material	Polymethyl methacrylate
Flammability mark	For mounting on normally flammable surfaces	Effective projected area	0.073 m ²
CE mark	CE mark	Color	Dark gray
Operating and electrical		Dimensions (Height x Width x Depth)	NaN x NaN x NaN mm
Input Voltage	220 to 240 V		
Input Frequency	50 to 60 Hz		

UniStrip G4

Approval and application

Ingress protection code	IP66 [Dust penetration-protected, jet-proof]
Mech. impact protection code	IK06 [1 J]

Initial performance (IEC compliant)

Initial luminous flux (system flux)	598 lm
Luminous flux tolerance	+/-10%
Initial LED luminaire efficacy	40 lm/W
Init. Corr. Color Temperature	-
Init. Color Rendering Index	80
Initial chromaticity	SDCM = 4
Initial input power	15 W
Power consumption tolerance	+/-10%

Application conditions

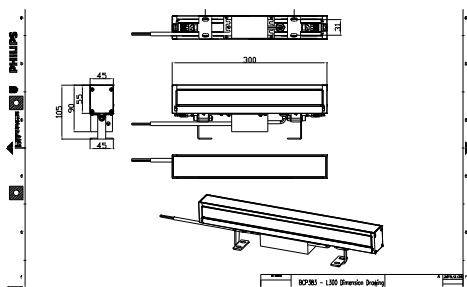
Ambient temperature range	-40 to +50 °C
---------------------------	---------------

Product data

Full product code	871951492144399
Order product name	BCP383 6LED 27K 220V A2 L30 D2
EAN/UPC - Product	8719514921443
Order code	911401735853
Numerator - Quantity Per Pack	1
Numerator - Packs per outer box	12
Material Nr. (12NC)	911401735853
Net Weight (Piece)	1.399 kg



Dimensional drawing



BCP383 6LED 27K 220V A2 L30 D2

