



# UniStrip G4

## BCP383 6LED 27K 220V A2 L30 DMX D2

UniStrip G4 - 586 lm - 15 W - -

UniStrip G4 is a surface mounted, exterior-rated LED luminaire that is designed for façade and outdoor architectural lighting applications. One family that fits all your needs, wall washing, grazing and also linear flood lighting. The robust mechanical and unique optical designs make it ideal for illuminating buildings facades, bridges, overpasses and any application that requires a linear lighting solution. Available in white, monochromatic colors, RGB, RGBW and tunable white and DMX control option available with up to 8 pixels (8IDs) to give architects and designers the freedom to explore a wide range of concepts and design with no limitations.

### Warnings and Safety

- For outdoor use only

### Product data

General information	
Light source color	Warm white
Driver included	Yes
Optical cover/lens type	Tempered glass
Control interface	Dynamix DMX
Connection	Flying leads/wires and 2 Push-in connector 4-pole
Cable	Cable 0.3 m without plug 3-pole + 2 Cables 0.3 m with connector 4-pole
Protection class IEC	Safety class I
Flammability mark	For mounting on normally flammable surfaces
CE mark	CE mark

Operating and electrical	
Input Voltage	220 to 240 V
Input Frequency	50 to 60 Hz
Inrush current	60 A
Power Factor (Min)	0.9

Controls and dimming	
Dimmable	Yes

Mechanical and housing	
Housing Material	Aluminum extruded
Optical cover/lens material	Polymethyl methacrylate
Effective projected area	0.073 m <sup>2</sup>
Color	Dark gray

# UniStrip G4

Dimensions (Height x Width x Depth) NaN x NaN x NaN mm

## Approval and application

Ingress protection code IP66 [ Dust penetration-protected, jet-proof]  
Mech. impact protection code IK06 [ 1 J]

## Initial performance (IEC compliant)

Initial luminous flux (system flux) 586 lm  
Luminous flux tolerance +/-10%  
Initial LED luminaire efficacy 39 lm/W  
Init. Corr. Color Temperature -  
Init. Color Rendering Index 80  
Initial chromaticity SDCM = 4  
Initial input power 15 W  
Power consumption tolerance +/-10%

## Application conditions

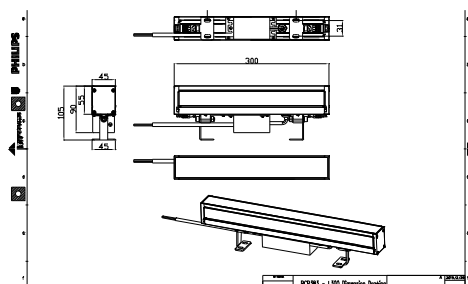
Ambient temperature range -40 to +50 °C

## Product data

Full product code 871951492145099  
Order product name BCP383 6LED 27K 220V A2 L30 DMX D2  
EAN/UPC - Product 8719514921450  
Order code 911401735863  
Numerator - Quantity Per Pack 1  
Numerator - Packs per outer box 12  
Material Nr. (12NC) 911401735863  
Net Weight (Piece) 1.399 kg



## Dimensional drawing



BCP383 6LED 27K 220V A2 L30 DMX D2

