



UniStrip G4

BCP384 18LED 30K 220V 45 L50 DMX D2

UniStrip G4 - 2160 lm - 40 W - 3000 K

UniStrip G4 is a surface mounted, exterior-rated LED luminaire that is designed for façade and outdoor architectural lighting applications.;One family that fits all your needs, wall washing, grazing and also linear flood lighting.;The robust mechanical and unique optical designs make it ideal for illuminating buildings facades, bridges, overpasses and any application that requires a linear lighting solution.;Available in white, monochromatic colors, RGB, RGBW and tunable white and DMX control option available with up to 8 pixels (8IDs) to give architects and designers the freedom to explore a wide range of concepts and design with no limitations.

Warnings and Safety

- For outdoor use only

Product data

General information		Operating and electrical	
Light source color	Warm white	Input Voltage	220 to 240 V
Driver included	Yes	Input Frequency	50 to 60 Hz
Optical cover/lens type	Tempered glass	Inrush current	60 A
Control interface	Dynamix DMX	Power Factor (Min)	0.9
Connection	Flying leads/wires and 2 Push-in connector 4-pole	Controls and dimming	
Cable	Cable 0.3 m without plug 3-pole + 2 Cables 0.3 m with connector 4-pole	Dimmable	Yes
Protection class IEC	Safety class I	Mechanical and housing	
Flammability mark	For mounting on normally flammable surfaces	Housing Material	Aluminum extruded
CE mark	CE mark	Optical cover/lens material	Polymethyl methacrylate
		Effective projected area	0.085 m ²
		Color	Dark gray

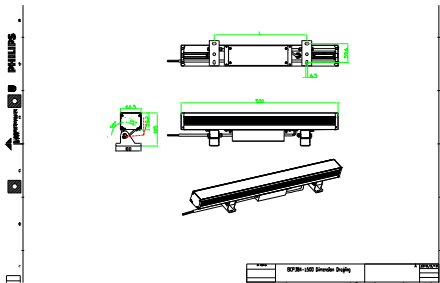
UniStrip G4

Dimensions (Height x Width x Depth) NaN x NaN x NaN mm	
Approval and application	
Ingress protection code	IP66 [Dust penetration-protected, jet-proof]
Mech. impact protection code	IK06 [1 J]
Initial performance (IEC compliant)	
Initial luminous flux (system flux)	2160 lm
Luminous flux tolerance	+/-10%
Initial LED luminaire efficacy	54 lm/W
Init. Corr. Color Temperature	3000 K
Init. Color Rendering Index	80
Initial chromaticity	SDCM = 4
Initial input power	40 W
Power consumption tolerance	+/-10%

Application conditions	
Ambient temperature range	-40 to +50 °C
Product data	
Full product code	871951492201399
Order product name	BCP384 18LED 30K 220V 45 L50 DMX D2
EAN/UPC - Product	8719514922013
Order code	911401736503
Numerator - Quantity Per Pack	1
Numerator - Packs per outer box	4
Material Nr. (12NC)	911401736503
Net Weight (Piece)	2.399 kg



Dimensional drawing



BCP384 18LED 30K 220V 45 L50 DMX D2

