



UniStrip G4

BCP384 18LED 40K 220V 45 L50 D2

UniStrip G4 - 2513 lm - 40 W - 4000 K

UniStrip G4 is a surface mounted, exterior-rated LED luminaire that is designed for façade and outdoor architectural lighting applications. One family that fits all your needs, wall washing, grazing and also linear flood lighting. The robust mechanical and unique optical designs make it ideal for illuminating buildings facades, bridges, overpasses and any application that requires a linear lighting solution. Available in white, monochromatic colors, RGB, RGBW and tunable white and DMX control option available with up to 8 pixels (8IDs) to give architects and designers the freedom to explore a wide range of concepts and design with no limitations.

Warnings and Safety

- For outdoor use only

Product data

General information	
Light source color	Neutral white
Driver included	Yes
Optical cover/lens type	Tempered glass
Control interface	-
Connection	Flying leads/wires
Cable	Cable 0.3 m without plug 3-pole
Protection class IEC	Safety class I
Flammability mark	For mounting on normally flammable surfaces
CE mark	CE mark

Operating and electrical	
Input Voltage	220 to 240 V
Input Frequency	50 to 60 Hz

Inrush current	60 A
Power Factor (Min)	0.9

Controls and dimming	
Dimmable	No

Mechanical and housing	
Housing Material	Aluminum extruded
Optical cover/lens material	Polymethyl methacrylate
Effective projected area	0.085 m ²
Color	Dark gray
Dimensions (Height x Width x Depth)	NaN x NaN x NaN mm

UniStrip G4

Approval and application

Ingress protection code	IP66 [Dust penetration-protected, jet-proof]
Mech. impact protection code	IK06 [1 J]

Initial performance (IEC compliant)

Initial luminous flux (system flux)	2513 lm
Luminous flux tolerance	+/-10%
Initial LED luminaire efficacy	63 lm/W
Init. Corr. Color Temperature	4000 K
Init. Color Rendering Index	80
Initial chromaticity	SDCM = 4
Initial input power	40 W
Power consumption tolerance	+/-10%

Application conditions

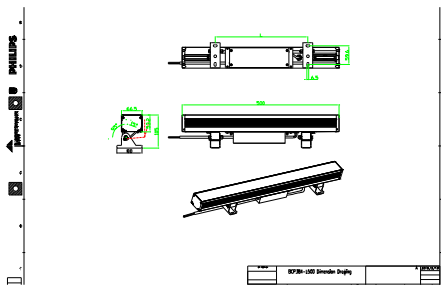
Ambient temperature range	-40 to +50 °C
---------------------------	---------------

Product data

Full product code	871951492320199
Order product name	BCP384 18LED 40K 220V 45 L50 D2
EAN/UPC - Product	8719514923201
Order code	911401736533
Numerator - Quantity Per Pack	1
Numerator - Packs per outer box	4
Material Nr. (12NC)	911401736533
Net Weight (Piece)	2.399 kg



Dimensional drawing



BCP384 18LED 40K 220V 45 L50 D2

