



UniStrip G4

BCP384 18LED 40K 220V A2 L50 DMX D2

UniStrip G4 - 2391 lm - 40 W - 4000 K

UniStrip G4 is a surface mounted, exterior-rated LED luminaire that is designed for façade and outdoor architectural lighting applications.;One family that fits all your needs, wall washing, grazing and also linear flood lighting.;The robust mechanical and unique optical designs make it ideal for illuminating buildings facades, bridges, overpasses and any application that requires a linear lighting solution.;Available in white, monochromatic colors, RGB, RGBW and tunable white and DMX control option available with up to 8 pixels (8IDs) to give architects and designers the freedom to explore a wide range of concepts and design with no limitations.

Warnings and Safety

- For outdoor use only

Product data

General information	
Light source color	Neutral white
Driver included	Yes
Optical cover/lens type	Tempered glass
Control interface	Dynamix DMX
Connection	Flying leads/wires and 2 Push-in connector 4-pole
Cable	Cable 0.3 m without plug 3-pole + 2 Cables 0.3 m with connector 4-pole
Protection class IEC	Safety class I
Flammability mark	For mounting on normally flammable surfaces
CE mark	CE mark

Operating and electrical	
Input Voltage	220 to 240 V
Input Frequency	50 to 60 Hz
Inrush current	60 A
Power Factor (Min)	0.9

Controls and dimming	
Dimmable	Yes

Mechanical and housing	
Housing Material	Aluminum extruded
Optical cover/lens material	Polymethyl methacrylate
Effective projected area	0.085 m ²
Color	Dark gray

UniStrip G4

Dimensions (Height x Width x Depth) NaN x NaN x NaN mm

Approval and application

Ingress protection code IP66 [Dust penetration-protected, jet-proof]

Mech. impact protection code IK06 [1 J]

Initial performance (IEC compliant)

Initial luminous flux (system flux) 2391 lm

Luminous flux tolerance +/-10%

Initial LED luminaire efficacy 60 lm/W

Init. Corr. Color Temperature 4000 K

Init. Color Rendering Index 80

Initial chromaticity SDCM = 4

Initial input power 40 W

Power consumption tolerance +/-10%

Application conditions

Ambient temperature range -40 to +50 °C

Product data

Full product code 871951492202099

Order product name BCP384 18LED 40K 220V A2 L50 DMX D2

EAN/UPC - Product 8719514922020

Order code 911401736523

Numerator - Quantity Per Pack 1

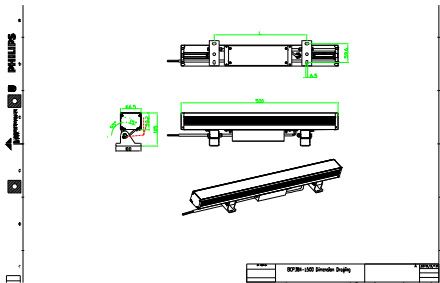
Numerator - Packs per outer box 4

Material Nr. (12NC) 911401736523

Net Weight (Piece) 2.399 kg



Dimensional drawing



BCP384 18LED 40K 220V A2 L50 DMX D2

