



UniStrip G4

BCP384 36LED 27K 220V 45 L100 D2

UniStrip G4 - 4121 lm - 80 W - 2700 K

UniStrip G4 is a surface mounted, exterior-rated LED luminaire that is designed for façade and outdoor architectural lighting applications. One family that fits all your needs, wall washing, grazing and also linear flood lighting. The robust mechanical and unique optical designs make it ideal for illuminating buildings facades, bridges, overpasses and any application that requires a linear lighting solution. Available in white, monochromatic colors, RGB, RGBW and tunable white and DMX control option available with up to 8 pixels (8IDs) to give architects and designers the freedom to explore a wide range of concepts and design with no limitations.

Warnings and Safety

- For outdoor use only

Product data

| General information | | Inrush current | 60 A |
|---------------------------------|---|-------------------------------------|-------------------------|
| Light source color | Warm white | Power Factor (Min) | 0.9 |
| Driver included | Yes | Controls and dimming | |
| Optical cover/lens type | Tempered glass | Dimmable | No |
| Control interface | - | Mechanical and housing | |
| Connection | Flying leads/wires | Housing Material | Aluminum extruded |
| Cable | Cable 0.3 m without plug 3-pole | Optical cover/lens material | Polymethyl methacrylate |
| Protection class IEC | Safety class I | Effective projected area | 0.085 m ² |
| Flammability mark | For mounting on normally flammable surfaces | Color | Dark gray |
| CE mark | CE mark | Dimensions (Height x Width x Depth) | NaN x NaN x NaN mm |
| Operating and electrical | | | |
| Input Voltage | 220 to 240 V | | |
| Input Frequency | 50 to 60 Hz | | |

UniStrip G4

Approval and application

| | |
|------------------------------|---|
| Ingress protection code | IP66 [Dust penetration-protected, jet-proof] |
| Mech. impact protection code | IK06 [1 J] |

Initial performance (IEC compliant)

| | |
|-------------------------------------|----------|
| Initial luminous flux (system flux) | 4121 lm |
| Luminous flux tolerance | +/-10% |
| Initial LED luminaire efficacy | 52 lm/W |
| Init. Corr. Color Temperature | 2700 K |
| Init. Color Rendering Index | 80 |
| Initial chromaticity | SDCM = 4 |
| Initial input power | 80 W |
| Power consumption tolerance | +/-10% |

Application conditions

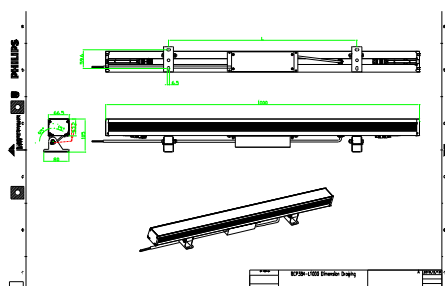
| | |
|---------------------------|---------------|
| Ambient temperature range | -40 to +50 °C |
|---------------------------|---------------|

Product data

| | |
|---------------------------------|----------------------------------|
| Full product code | 871951492322599 |
| Order product name | BCP384 36LED 27K 220V 45 L100 D2 |
| EAN/UPC - Product | 8719514923225 |
| Order code | 911401736613 |
| Numerator - Quantity Per Pack | 1 |
| Numerator - Packs per outer box | 4 |
| Material Nr. (12NC) | 911401736613 |
| Net Weight (Piece) | 4.199 kg |



Dimensional drawing



BCP384 36LED 27K 220V 45 L100 D2

