



# UniStrip G4

## BCP384 36LED 40K 220V 45 L100 D2

UniStrip G4 - 5028 lm - 80 W - 4000 K

UniStrip G4 is a surface mounted, exterior-rated LED luminaire that is designed for façade and outdoor architectural lighting applications. One family that fits all your needs, wall washing, grazing and also linear flood lighting. The robust mechanical and unique optical designs make it ideal for illuminating buildings facades, bridges, overpasses and any application that requires a linear lighting solution. Available in white, monochromatic colors, RGB, RGBW and tunable white and DMX control option available with up to 8 pixels (8IDs) to give architects and designers the freedom to explore a wide range of concepts and design with no limitations.

### Warnings and Safety

- For outdoor use only

### Product data

| General information     |   |
|-------------------------|---|
| Light source color      | Neutral white                               |
| Driver included         | Yes   |
| Optical cover/lens type | Tempered glass                              |
| Control interface       | -   |
| Connection              | Flying leads/wires                          |
| Cable                   | Cable 0.3 m without plug 3-pole             |
| Protection class IEC    | Safety class I                              |
| Flammability mark       | For mounting on normally flammable surfaces |
| CE mark                 | CE mark                                     |

| Operating and electrical |              |
|--------------------------|--------------|
| Input Voltage            | 220 to 240 V |
| Input Frequency          | 50 to 60 Hz  |

|                    |      |
|--------------------|------|
| Inrush current     | 60 A |
| Power Factor (Min) | 0.9  |

| Controls and dimming |    |
|----------------------|----|
| Dimmable             | No |

| Mechanical and housing              |                         |
|-------------------------------------|-------------------------|
| Housing Material                    | Aluminum extruded       |
| Optical cover/lens material         | Polymethyl methacrylate |
| Effective projected area            | 0.085 m <sup>2</sup>    |
| Color                               | Dark gray               |
| Dimensions (Height x Width x Depth) | NaN x NaN x NaN mm      |

# UniStrip G4

## Approval and application

|                              |   |
|------------------------------|---|
| Ingress protection code      | IP66 [ Dust penetration-protected, jet-proof] |
| Mech. impact protection code | IK06 [ 1 J]                                   |

## Initial performance (IEC compliant)

|                                     |          |
|-------------------------------------|----------|
| Initial luminous flux (system flux) | 5028 lm  |
| Luminous flux tolerance             | +/-10%   |
| Initial LED luminaire efficacy      | 63 lm/W  |
| Init. Corr. Color Temperature       | 4000 K   |
| Init. Color Rendering Index         | 80       |
| Initial chromaticity                | SDCM = 4 |
| Initial input power                 | 80 W     |
| Power consumption tolerance         | +/-10%   |

## Application conditions

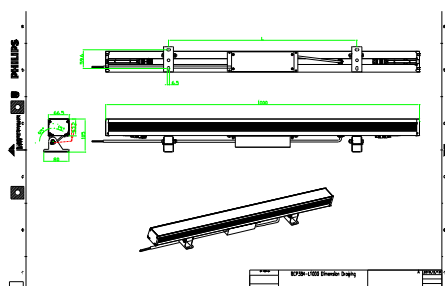
|                           |               |
|---------------------------|---------------|
| Ambient temperature range | -40 to +50 °C |
|---------------------------|---------------|

## Product data

|                                 |                                  |
|---------------------------------|----------------------------------|
| Full product code               | 871951492326399                  |
| Order product name              | BCP384 36LED 40K 220V 45 L100 D2 |
| EAN/UPC - Product               | 8719514923263                    |
| Order code                      | 911401736693                     |
| Numerator - Quantity Per Pack   | 1                                |
| Numerator - Packs per outer box | 4                                |
| Material Nr. (12NC)             | 911401736693                     |
| Net Weight (Piece)              | 4.199 kg                         |



## Dimensional drawing



BCP384 36LED 40K 220V 45 L100 D2

