



UniStrip G4

BCP385 48LED 27K 220V 7 L100 DMX D3

UniStrip G4 - 5698 lm - 100 W - 2700 K

UniStrip G4 is a surface mounted, exterior-rated LED luminaire that is designed for façade and outdoor architectural lighting applications.;One family that fits all your needs, wall washing, grazing and also linear flood lighting.;The robust mechanical and unique optical designs make it ideal for illuminating buildings facades, bridges, overpasses and any application that requires a linear lighting solution.;Available in white, monochromatic colors, RGB, RGBW and tunable white and DMX control option available with up to 8 pixels (8IDs) to give architects and designers the freedom to explore a wide range of concepts and design with no limitations.

Warnings and Safety

- For outdoor use only

Product data

General information		Operating and electrical	
Light source color	Warm white	Input Voltage	220 to 240 V
Driver included	Yes	Input Frequency	50 to 60 Hz
Optical cover/lens type	Tempered glass	Inrush current	70 A
Control interface	Dynamix DMX	Power Factor (Min)	0.9
Connection	Flying leads/wires and 2 Push-in connector 4-pole	Controls and dimming	
Cable	Cable 0.3 m without plug 3-pole + 2 Cables 0.3 m with connector 4-pole	Dimmable	Yes
Protection class IEC	Safety class I	Mechanical and housing	
Flammability mark	For mounting on normally flammable surfaces	Housing Material	Aluminum extruded
CE mark	CE mark	Optical cover/lens material	Polymethyl methacrylate
		Effective projected area	0.135 m ²
		Color	Dark gray

UniStrip G4

Dimensions (Height x Width x Depth) NaN x NaN x NaN mm

Approval and application

Ingress protection code IP66 [Dust penetration-protected, jet-proof]

Mech. impact protection code IK06 [1 J]

Initial performance (IEC compliant)

Initial luminous flux (system flux) 5698 lm

Luminous flux tolerance +/-10%

Initial LED luminaire efficacy 57 lm/W

Init. Corr. Color Temperature 2700 K

Init. Color Rendering Index 80

Initial chromaticity SDCM = 4

Initial input power 100 W

Power consumption tolerance +/-10%

Application conditions

Ambient temperature range -40 to +50 °C

Product data

Full product code 871951492233499

Order product name BCP385 48LED 27K 220V 7 L100 DMX D3

EAN/UPC - Product 8719514922334

Order code 911401737023

Numerator - Quantity Per Pack 1

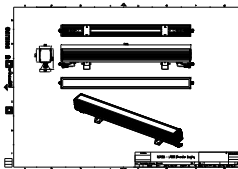
Numerator - Packs per outer box 2

Material Nr. (12NC) 911401737023

Net Weight (Piece) 3.949 kg



Dimensional drawing



BCP385 48LED 27K 220V 7 L100 DMX D3

