



# UniStrip G4

## BCP385 60LED 27K 220V 7 L100 DMX D3

UniStrip G4 - 7123 lm - 120 W - 2700 K

UniStrip G4 is a surface mounted, exterior-rated LED luminaire that is designed for façade and outdoor architectural lighting applications.;One family that fits all your needs, wall washing, grazing and also linear flood lighting.;The robust mechanical and unique optical designs make it ideal for illuminating buildings facades, bridges, overpasses and any application that requires a linear lighting solution.;Available in white, monochromatic colors, RGB, RGBW and tunable white and DMX control option available with up to 8 pixels (8IDs) to give architects and designers the freedom to explore a wide range of concepts and design with no limitations.

### Warnings and Safety

- For outdoor use only

### Product data

General information	
Light source color	Warm white
Driver included	Yes
Optical cover/lens type	Tempered glass
Control interface	Dynamix DMX
Connection	Flying leads/wires and 2 Push-in connector 4-pole
Cable	Cable 0.3 m without plug 3-pole + 2 Cables 0.3 m with connector 4-pole
Protection class IEC	Safety class I
Flammability mark	For mounting on normally flammable surfaces
CE mark	CE mark

Operating and electrical	
Input Voltage	220 to 240 V
Input Frequency	50 to 60 Hz
Inrush current	70 A
Power Factor (Min)	0.9

Controls and dimming	
Dimmable	Yes

Mechanical and housing	
Housing Material	Aluminum extruded
Optical cover/lens material	Polymethyl methacrylate
Effective projected area	0.135 m <sup>2</sup>
Color	Dark gray

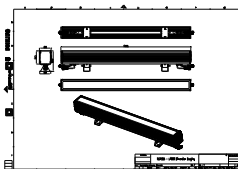
# UniStrip G4

<b>Dimensions (Height x Width x Depth)</b>	NaN x NaN x NaN mm
<b>Approval and application</b>	
<b>Ingress protection code</b>	IP66 [ Dust penetration-protected, jet-proof]
<b>Mech. impact protection code</b>	IK06 [ 1 J]
<b>Initial performance (IEC compliant)</b>	
<b>Initial luminous flux (system flux)</b>	7123 lm
<b>Luminous flux tolerance</b>	+/-10%
<b>Initial LED luminaire efficacy</b>	59 lm/W
<b>Init. Corr. Color Temperature</b>	2700 K
<b>Init. Color Rendering Index</b>	80
<b>Initial chromaticity</b>	SDCM = 4
<b>Initial input power</b>	120 W
<b>Power consumption tolerance</b>	+/-10%

<b>Application conditions</b>	
<b>Ambient temperature range</b>	-40 to +50 °C
<b>Product data</b>	
<b>Full product code</b>	871951492240299
<b>Order product name</b>	BCP385 60LED 27K 220V 7 L100 DMX D3
<b>EAN/UPC - Product</b>	8719514922402
<b>Order code</b>	911401737143
<b>Numerator - Quantity Per Pack</b>	1
<b>Numerator - Packs per outer box</b>	2
<b>Material Nr. (12NC)</b>	911401737143
<b>Net Weight (Piece)</b>	3.949 kg



## Dimensional drawing



BCP385 60LED 27K 220V 7 L100 DMX D3

