



UniFlood C

BVP321 12LED 40K 220V 30 D2

UniFlood C - 2340 lm - 27 W - -

UniFlood C is a circular shaped, exterior-rated and cost-effective architectural LED floodlight that is designed for façade, landscape and outdoor flood lighting applications. The robust mechanical design and high-efficiency optical design make it ideal for illuminating multi-story exterior facades, bridges, landmarks and monuments. Available in white, monochromatic colors, RGB, RGBW and tunable white. Six different spread lenses ranging from narrow spot to wide flood and DMX512/RDM control option available to give architects and designers the freedom to explore a wide range of concepts and design with no limitations.

Warnings and Safety

- For outdoor use only

Product data

General information		Inrush current	
Light source color	Neutral white	Inrush current	60 A
Driver included	Yes	Power Factor (Min)	0.9
Optical cover/lens type	Tempered glass	Controls and dimming	
Control interface	-	Dimmable	No
Connection	Flying leads/wires	Mechanical and housing	
Cable	Cable 0.5 m without plug 3-pole	Housing Material	Aluminum die cast
Protection class IEC	Safety class I	Optical cover/lens material	Polymethyl methacrylate
Flammability mark	For mounting on normally flammable surfaces	Effective projected area	0.03 m ²
CE mark	CE mark	Color	Dark gray
Operating and electrical		Approval and application	
Input Voltage	220 to 240 V	Ingress protection code	IP66 [Dust penetration-protected, jet-proof]
Input Frequency	50 to 60 Hz		

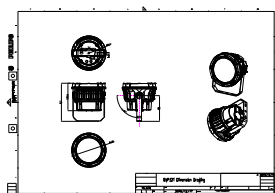
UniFlood C

Mech. impact protection code	IK08 [5 J vandal-protected]
Initial performance (IEC compliant)	
Initial luminous flux (system flux)	2340 lm
Luminous flux tolerance	+/-10%
Initial LED luminaire efficacy	87 lm/W
Init. Corr. Color Temperature	-
Init. Color Rendering Index	80
Initial chromaticity	4 SDCM
Initial input power	27 W
Power consumption tolerance	+/-10%
Application conditions	
Ambient temperature range	-40 to +50 °C

Product data	
Full product code	871951453837599
Order product name	BVP321 12LED 40K 220V 30 D2
EAN/UPC - Product	8719514538375
Order code	911401730703
Numerator - Quantity Per Pack	1
Numerator - Packs per outer box	6
Material Nr. (12NC)	911401730703
Net Weight (Piece)	2.366 kg



Dimensional drawing



BVP321 12LED 40K 220V 30 D2

