



# UniFlood C

## BVP321 12LED RGB 220V 45 DMX D2

UniFlood C - 1140 lm - 27 W - -

UniFlood C is a circular shaped, exterior-rated and cost-effective architectural LED floodlight that is designed for façade, landscape and outdoor flood lighting applications. The robust mechanical design and high-efficiency optical design make it ideal for illuminating multi-story exterior facades, bridges, landmarks and monuments. Available in white, monochromatic colors, RGB, RGBW and tunable white. Six different spread lenses ranging from narrow spot to wide flood and DMX512/RDM control option available to give architects and designers the freedom to explore a wide range of concepts and design with no limitations.

### Warnings and Safety

- For outdoor use only

### Product data

General information	
Light source color	Red, green and blue
Driver included	Yes
Optical cover/lens type	Tempered glass
Control interface	Dynamic DMX/RDM
Connection	Flying leads/wires and 2 Push-in connector 4-pole
Cable	Cable 0.5 m without plug 3-pole and 2 Cables 0.5 m with connector 4-pole
Protection class IEC	Safety class I
Flammability mark	For mounting on normally flammable surfaces
CE mark	CE mark
Operating and electrical	
Input Voltage	220 to 240 V
Input Frequency	50 to 60 Hz
Inrush current	60 A
Power Factor (Min)	0.9
Controls and dimming	
Dimmable	Yes
Mechanical and housing	
Housing Material	Aluminum die cast
Optical cover/lens material	Polymethyl methacrylate
Effective projected area	0.03 m <sup>2</sup>
Color	Dark gray

# UniFlood C

## Approval and application

Ingress protection code	IP66 [ Dust penetration-protected, jet-proof]
Mech. impact protection code	IK08 [ 5 J vandal-protected]

## Initial performance (IEC compliant)

Initial luminous flux (system flux)	1140 lm
Luminous flux tolerance	+/-10%
Initial LED luminaire efficacy	42 lm/W
Init. Corr. Color Temperature	-
Init. Color Rendering Index	-
Initial chromaticity	-
Initial input power	27 W
Power consumption tolerance	+/-10%

## Application conditions

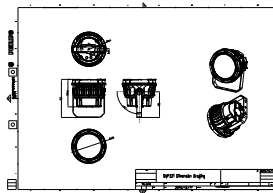
Ambient temperature range	-40 to +50 °C
---------------------------	---------------

## Product data

Full product code	871951453848199
Order product name	BVP321 12LED RGB 220V 45 DMX D2
EAN/UPC - Product	8719514538481
Order code	911401730813
Numerator - Quantity Per Pack	1
Numerator - Packs per outer box	6
Material Nr. (12NC)	911401730813
Net Weight (Piece)	2.366 kg



## Dimensional drawing



BVP321 12LED RGB 220V 45 DMX D2

