



# UniFlood C

## BVP321 8LED RGBNW 220V 30 DMX D2

UniFlood C - 960 lm - 18 W - -

UniFlood C is a circular shaped, exterior-rated and cost-effective architectural LED floodlight that is designed for façade, landscape and outdoor flood lighting applications. The robust mechanical design and high-efficiency optical design make it ideal for illuminating multi-story exterior facades, bridges, landmarks and monuments. Available in white, monochromatic colors, RGB, RGBW and tunable white. Six different spread lenses ranging from narrow spot to wide flood and DMX512/RDM control option available to give architects and designers the freedom to explore a wide range of concepts and design with no limitations.

### Warnings and Safety

- For outdoor use only

### Product data

General information		Input Frequency	
Light source color	Red, green, blue and white	Input Frequency	50 to 60 Hz
Driver included	Yes	Inrush current	60 A
Optical cover/lens type	Tempered glass	Power Factor (Min)	0.9
Control interface	Dynamic DMX/RDM	Controls and dimming	
Connection	Flying leads/wires and 2 Push-in connector 4-pole	Dimmable	Yes
Cable	Cable 0.5 m without plug 3-pole and 2 Cables 0.5 m with connector 4-pole	Mechanical and housing	
Protection class IEC	Safety class I	Housing Material	Aluminum die cast
Flammability mark	For mounting on normally flammable surfaces	Optical cover/lens material	Polymethyl methacrylate
CE mark	CE mark	Effective projected area	0.03 m <sup>2</sup>
		Color	Dark gray
Operating and electrical			
Input Voltage	220 to 240 V		

# UniFlood C

## Approval and application

Ingress protection code	IP66 [ Dust penetration-protected, jet-proof]
Mech. impact protection code	IK08 [ 5 J vandal-protected]

## Initial performance (IEC compliant)

Initial luminous flux (system flux)	960 lm
Luminous flux tolerance	+/-10%
Initial LED luminaire efficacy	53 lm/W
Init. Corr. Color Temperature	-
Init. Color Rendering Index	-
Initial chromaticity	-
Initial input power	18 W
Power consumption tolerance	+/-10%

## Application conditions

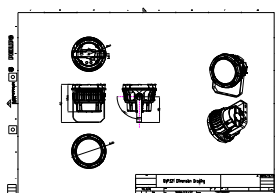
Ambient temperature range	-40 to +50 °C
---------------------------	---------------

## Product data

Full product code	871951453796599
Order product name	BVP321 8LED RGBNW 220V 30 DMX D2
EAN/UPC - Product	8719514537965
Order code	911401730293
Numerator - Quantity Per Pack	1
Numerator - Packs per outer box	6
Material Nr. (12NC)	911401730293
Net Weight (Piece)	2.366 kg



## Dimensional drawing



BVP321 8LED RGBNW 220V 30 DMX D2

