



# GreenPerform Waterproof G3

WT198X LED27S/865 L1 W L1200

GreenPerform Waterproof G3 is a superb choice for hard-working applications. Not only does it provide excellent optical performance, it also delivers substantial energy saving. And because it works seamlessly with IoT software like Interact, it also offers the option of customization, convenience, and data-driven insights.

## Product data

| General information                      |                   |
|--|-------------------|
| Light source color                       | 865 cool daylight |
| Optical cover/lens type                  | -                 |
| Control interface                        | InterAct Pro      |
| Protection class IEC                     | Safety class I    |
| CE mark                                  | CE mark           |
| Number of products on MCB of 16 A type B | 84                |
| Light source engine type                 | LED               |
| Operating and electrical                 |                   |
| Input Voltage                            | 220-240 V         |
| Input Frequency                          | 50 to 60 Hz       |
| Inrush current                           | 8 A               |
| Power Factor (Min)                       | 0.9               |
| Controls and dimming                     |                   |
| Dimmable                                 | Wireless Dim      |

| Mechanical and housing              |  |
|-------------------------------------|--|
| Housing Material                    | Polycarbonate  |
| Optical cover/lens material         | Polycarbonate  |
| Optical cover/lens finish           | Clear  |
| Overall length                      | 1215 mm  |
| Overall width                       | 80 mm  |
| Overall height                      | 76 mm  |
| Color                               | Gray   |
| Approval and application            |  |
| Ingress protection code             | IP43/65 [ Wire-protected, rain/spray-proof; dust penetration-protected, jet-proof] |
| Mech. impact protection code        | IK08 [ 5 J vandal-protected]   |
| Initial performance (IEC compliant) |  |
| Initial luminous flux (system flux) | 2700 lm  |
| Luminous flux tolerance             | +/-10%   |
| Initial LED luminaire efficacy      | 140 lm/W   |

# GreenPerform Waterproof G3

|                               |        |
|-------------------------------|--------|
| Init. Corr. Color Temperature | 6500 K |
| Init. Color Rendering Index   | >80    |
| Initial input power           | 18.8 W |
| Power consumption tolerance   | +/-10% |

## Application conditions

|                           |               |
|---------------------------|---------------|
| Ambient temperature range | -20 to +45 °C |
|---------------------------|---------------|

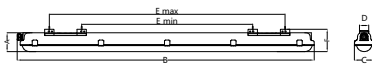
## Product data

|                    |                              |
|--------------------|------------------------------|
| Order product name | WT198X LED27S/865 L1 W L1200 |
|--------------------|------------------------------|

|                                 |              |
|---------------------------------|--------------|
| Order code                      | 911401552102 |
| Numerator - Quantity Per Pack   | 1            |
| Numerator - Packs per outer box | 9            |
| Material Nr. (12NC)             | 911401552102 |
| Net Weight (Piece)              | 1.390 kg     |



## Dimensional drawing



| Type | Dimensions (mm) |     |    |    |       |       | No. clips |
|------|-----------------|-----|----|----|-------|-------|-----------|
|      | A               | B   | C  | D  | E max | E min |           |
| 1090 | 76              | 205 | 80 | 33 | 512   | 512   | 0         |
| 1100 | 76              | 215 | 80 | 33 | 520   | 520   | 0         |
| 1150 | 76              | 215 | 80 | 33 | 562   | 562   | 12        |

WT198X LED27S/865 L1 W L1200

