



UniStrip G4

BCP386 12LED RGBNW 24V 45 L30 DMX

UniStrip G4 - 150 lm - 3 W - - K

UniStrip G4 is a surface mounted, exterior-rated LED luminaire that is designed for façade and outdoor architectural lighting applications.;One family that fits all your needs, wall washing, grazing and also linear flood lighting.;The robust mechanical and unique optical designs make it ideal for illuminating buildings facades, bridges, overpasses and any application that requires a linear lighting solution.;Available in white, monochromatic colors, RGB, RGBW and tunable white and DMX control option available with up to 8 pixels (8IDs) to give architects and designers the freedom to explore a wide range of concepts and design with no limitations.

Warnings and Safety

- For outdoor use only

Product data

General information		Power Factor (Min)		0.9
Light source color	Red, green, blue and white	Controls and dimming		
Driver included	No	Dimmable	Yes	
Optical cover/lens type	Clear glass	Mechanical and housing		
Control interface	Dynamic DMX	Housing Material	Aluminum extruded	
Connection	2 Push-in connector 5-pole	Optical cover/lens material	Polymethyl methacrylate	
Cable	2 cables 0.15m with connectors 5-pole	Overall length	300 mm	
Protection class IEC	Safety class III	Overall width	25.4 mm	
CE mark	CE mark	Overall height	71.6 mm	
		Color	Dark gray	
Operating and electrical				
Input Voltage	24 DC V			
Input Frequency	- Hz			

UniStrip G4

Approval and application

Ingress protection code	IP66 [Dust penetration-protected, jet-proof]
Mech. impact protection code	IK06 [1 J]

Initial performance (IEC compliant)

Initial luminous flux (system flux)	150 lm
Luminous flux tolerance	+/-10%
Initial LED luminaire efficacy	50 lm/W
Init. Corr. Color Temperature	- K
Init. Color Rendering Index	-
Initial input power	3 W
Power consumption tolerance	+/-10%

Application conditions

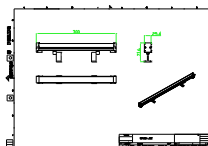
Ambient temperature range	-40 to +50 °C
---------------------------	---------------

Product data

Full product code	871951451375499
Order product name	BCP386 12LED RGBNW 24V 45 L30 DMX
EAN/UPC - Product	8719514513754
Order code	911401780102
Numerator - Quantity Per Pack	1
Numerator - Packs per outer box	50
Material Nr. (12NC)	911401780102
Net Weight (Piece)	0.360 kg



Dimensional drawing



BCP386 12LED RGBNW 24V 45 L30 DMX

