



UniStrip G4

BCP386 30LED 40K 24V A11 L50

UniStrip G4 - 515 lm - 7.5 W - 4000 K

UniStrip G4 is a surface mounted, exterior-rated LED luminaire that is designed for façade and outdoor architectural lighting applications.;One family that fits all your needs, wall washing, grazing and also linear flood lighting.;The robust mechanical and unique optical designs make it ideal for illuminating buildings facades, bridges, overpasses and any application that requires a linear lighting solution.;Available in white, monochromatic colors, RGB, RGBW and tunable white and DMX control option available with up to 8 pixels (8IDs) to give architects and designers the freedom to explore a wide range of concepts and design with no limitations.

Warnings and Safety

- For outdoor use only

Product data

General information		Power Factor (Min)	
Light source color	Neutral white	0.9	
Driver included	No	Controls and dimming	
Optical cover/lens type	Clear glass	Dimmable	No
Control interface	-	Mechanical and housing	
Connection	2 Push-in connector 2-pole	Housing Material	Aluminum extruded
Cable	2 cables 0.15m with connectors 2-pole	Optical cover/lens material	Polymethyl methacrylate
Protection class IEC	Safety class III	Overall length	500 mm
CE mark	CE mark	Overall width	25.4 mm
Operating and electrical		Overall height	71.6 mm
Input Voltage	24 DC V	Color	Dark gray
Input Frequency	- Hz		

UniStrip G4

Approval and application

Ingress protection code	IP66 [Dust penetration-protected, jet-proof]
Mech. impact protection code	IK06 [1 J]

Initial performance (IEC compliant)

Initial luminous flux (system flux)	515 lm
Luminous flux tolerance	+/-10%
Initial LED luminaire efficacy	69 lm/W
Init. Corr. Color Temperature	4000 K
Init. Color Rendering Index	80
Initial input power	7.5 W
Power consumption tolerance	+/-10%

Application conditions

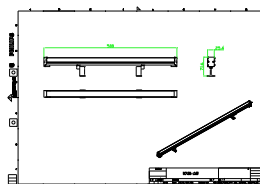
Ambient temperature range	-40 to +50 °C
---------------------------	---------------

Product data

Full product code	871951451398399
Order product name	BCP386 30LED 40K 24V A11 L50
EAN/UPC - Product	8719514513983
Order code	911401780332
Numerator - Quantity Per Pack	1
Numerator - Packs per outer box	50
Material Nr. (12NC)	911401780332
Copy Net Weight (Piece)	0.456 kg



Dimensional drawing



BCP386 30LED 40K 24V A11 L50

