



UniStrip G4

BCP386 30LED RGBNW 24V A11 L50 DMX

UniStrip G4 - 375 lm - 8 W - - K

UniStrip G4 is a surface mounted, exterior-rated LED luminaire that is designed for façade and outdoor architectural lighting applications.;One family that fits all your needs, wall washing, grazing and also linear flood lighting.;The robust mechanical and unique optical designs make it ideal for illuminating buildings facades, bridges, overpasses and any application that requires a linear lighting solution.;Available in white, monochromatic colors, RGB, RGBW and tunable white and DMX control option available with up to 8 pixels (8IDs) to give architects and designers the freedom to explore a wide range of concepts and design with no limitations.

Warnings and Safety

- For outdoor use only

Product data

General information	
Light source color	Red, green, blue and white
Driver included	No
Optical cover/lens type	Clear glass
Control interface	Dynamic DMX
Connection	2 Push-in connector 5-pole
Cable	2 cables 0.15m with connectors 5-pole
Protection class IEC	Safety class III
CE mark	CE mark

Power Factor (Min)	0.9
--------------------	-----

Controls and dimming	
Dimmable	Yes

Mechanical and housing	
Housing Material	Aluminum extruded
Optical cover/lens material	Polymethyl methacrylate
Overall length	500 mm
Overall width	25.4 mm
Overall height	71.6 mm
Color	Dark gray

Operating and electrical	
Input Voltage	24 DC V
Input Frequency	- Hz

UniStrip G4

Approval and application

Ingress protection code	IP66 [Dust penetration-protected, jet-proof]
Mech. impact protection code	IK06 [1 J]

Initial performance (IEC compliant)

Initial luminous flux (system flux)	375 lm
Luminous flux tolerance	+/-10%
Initial LED luminaire efficacy	47 lm/W
Init. Corr. Color Temperature	- K
Init. Color Rendering Index	-
Initial input power	8 W
Power consumption tolerance	+/-10%

Application conditions

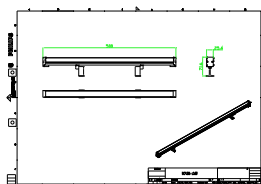
Ambient temperature range	-40 to +50 °C
---------------------------	---------------

Product data

Full product code	871951451402799
Order product name	BCP386 30LED RGBNW 24V A11 L50 DMX
EAN/UPC - Product	8719514514027
Order code	911401780372
Numerator - Quantity Per Pack	1
Numerator - Packs per outer box	50
Material Nr. (12NC)	911401780372
Net Weight (Piece)	0.456 kg



Dimensional drawing



BCP386 30LED RGBNW 24V A11 L50 DMX

