



# UniStrip G4

## BCP386 30LED RGBWW 24V 45 L50 DMX

UniStrip G4 - 375 lm - 8 W - - K

UniStrip G4 is a surface mounted, exterior-rated LED luminaire that is designed for façade and outdoor architectural lighting applications.;One family that fits all your needs, wall washing, grazing and also linear flood lighting.;The robust mechanical and unique optical designs make it ideal for illuminating buildings facades, bridges, overpasses and any application that requires a linear lighting solution.;Available in white, monochromatic colors, RGB, RGBW and tunable white and DMX control option available with up to 8 pixels (8IDs) to give architects and designers the freedom to explore a wide range of concepts and design with no limitations.

### Warnings and Safety

- For outdoor use only

### Product data

General information		Power Factor (Min)	
Light source color	Red, green, blue and white	0.9	
Driver included	No	Controls and dimming	
Optical cover/lens type	Clear glass	Dimmable	Yes
Control interface	Dynamic DMX	Mechanical and housing	
Connection	2 Push-in connector 5-pole	Housing Material	Aluminum extruded
Cable	2 cables 0.15m with connectors 5-pole	Optical cover/lens material	Polymethyl methacrylate
Protection class IEC	Safety class III	Overall length	500 mm
CE mark	CE mark	Overall width	25.4 mm
Operating and electrical		Overall height	71.6 mm
Input Voltage	24 DC V	Color	Dark gray
Input Frequency	- Hz		

# UniStrip G4

## Approval and application

Ingress protection code	IP66 [ Dust penetration-protected, jet-proof]
Mech. impact protection code	IK06 [ 1 J]

## Initial performance (IEC compliant)

Initial luminous flux (system flux)	375 lm
Luminous flux tolerance	+/-10%
Initial LED luminaire efficacy	47 lm/W
Init. Corr. Color Temperature	- K
Init. Color Rendering Index	-
Initial input power	8 W
Power consumption tolerance	+/-10%

## Application conditions

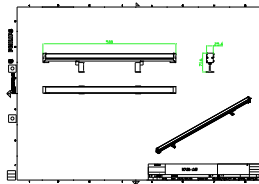
Ambient temperature range	-40 to +50 °C
---------------------------	---------------

## Product data

Full product code	871951451399099
Order product name	BCP386 30LED RGBWW 24V 45 L50 DMX
EAN/UPC - Product	8719514513990
Order code	911401780342
Numerator - Quantity Per Pack	1
Numerator - Packs per outer box	50
Material Nr. (12NC)	911401780342
Net Weight (Piece)	0.456 kg



## Dimensional drawing



BCP386 30LED RGBWW 24V 45 L50 DMX

