



# UniStrip G4

## BCP386 60LED 27K 24V 45 L100

UniStrip G4 - 975 lm - 15 W - 2700 K

UniStrip G4 is a surface mounted, exterior-rated LED luminaire that is designed for façade and outdoor architectural lighting applications.;One family that fits all your needs, wall washing, grazing and also linear flood lighting.;The robust mechanical and unique optical designs make it ideal for illuminating buildings facades, bridges, overpasses and any application that requires a linear lighting solution.;Available in white, monochromatic colors, RGB, RGBW and tunable white and DMX control option available with up to 8 pixels (8IDs) to give architects and designers the freedom to explore a wide range of concepts and design with no limitations.

### Warnings and Safety

- For outdoor use only

### Product data

| General information      |                                       | Power Factor (Min)          |                         | 0.9 |
|--------------------------|---------------------------------------|-----------------------------|-------------------------|-----|
| Light source color       | Warm white                            | Controls and dimming        |                         |     |
| Driver included          | No                                    | Dimmable                    | No                      |     |
| Optical cover/lens type  | Clear glass                           | Mechanical and housing      |                         |     |
| Control interface        | -                                     | Housing Material            | Aluminum extruded       |     |
| Connection               | 2 Push-in connector 2-pole            | Optical cover/lens material | Polymethyl methacrylate |     |
| Cable                    | 2 cables 0.15m with connectors 2-pole | Overall length              | 1000 mm                 |     |
| Protection class IEC     | Safety class III                      | Overall width               | 25.4 mm                 |     |
| CE mark                  | CE mark                               | Overall height              | 71.6 mm                 |     |
|                          |                                       | Color                       | Dark gray               |     |
| Operating and electrical |                                       |                             |                         |     |
| Input Voltage            | 24 DC V                               |                             |                         |     |
| Input Frequency          | - Hz                                  |                             |                         |     |

# UniStrip G4

## Approval and application

|                              |   |
|------------------------------|---|
| Ingress protection code      | IP66 [ Dust penetration-protected, jet-proof] |
| Mech. impact protection code | IK06 [ 1 J]                                   |

## Initial performance (IEC compliant)

|                                     |         |
|-------------------------------------|---------|
| Initial luminous flux (system flux) | 975 lm  |
| Luminous flux tolerance             | +/-10%  |
| Initial LED luminaire efficacy      | 65 lm/W |
| Init. Corr. Color Temperature       | 2700 K  |
| Init. Color Rendering Index         | 80      |
| Initial input power                 | 15 W    |
| Power consumption tolerance         | +/-10%  |

## Application conditions

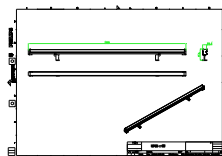
|                           |               |
|---------------------------|---------------|
| Ambient temperature range | -40 to +50 °C |
|---------------------------|---------------|

## Product data

|                                 |                              |
|---------------------------------|------------------------------|
| Full product code               | 871951451407299              |
| Order product name              | BCP386 60LED 27K 24V 45 L100 |
| EAN/UPC - Product               | 8719514514072                |
| Order code                      | 911401780422                 |
| Numerator - Quantity Per Pack   | 1                            |
| Numerator - Packs per outer box | 25                           |
| Material Nr. (12NC)             | 911401780422                 |
| Copy Net Weight (Piece)         | 0.908 kg                     |



## Dimensional drawing



BCP386 60LED 27K 24V 45 L100

