



UniBar

BCS340 48LED 30K 24V OC L100

UniBar - 565 lm - 12 W - 3000 K

UniBar is a surface mounted, exterior-rated and slim sized linear LED direct view luminaire that is designed for façade and outdoor architectural lighting applications. The robust mechanical and unique optical design make it ideal for buildings facades, media facades, bridges, overpasses and any application that requires a slim linear direct view lighting solution. Direct view spread lens, through wiring for end-to-end connection and DMX control option available with up to 10 pixels (10IDs) to give architects and designers the freedom to explore a wide range of concepts and design with no limitations. Available in white, monochromatic colors, RGB, RGBW and tunable white.

Product data

| General information | | Controls and dimming | |
|--------------------------|--|------------------------------|---|
| Light source color | Warm white | Dimmable | No |
| Driver included | No | | |
| Optical cover/lens type | Opal | Mechanical and housing | |
| Control interface | - | Housing Material | Aluminum extruded |
| Connection | 2 Push-in connector 2-pole | Optical cover/lens material | Polycarbonate |
| Cable | 2 cables (0.2m input + 0.1m output) with connectors 2-pole | Overall length | 1000 mm |
| Protection class IEC | Safety class III | Overall width | 28 mm |
| CE mark | CE mark | Overall height | 65 mm |
| | | Color | Silver |
| Operating and electrical | | Approval and application | |
| Input Voltage | 24 DC V | Ingress protection code | IP66 [Dust penetration-protected, jet-proof] |
| Input Frequency | - Hz | Mech. impact protection code | IK08 [5 J vandal-protected] |
| Power Factor (Min) | 0.9 | | |

Initial performance (IEC compliant)

| | |
|-------------------------------------|---------|
| Initial luminous flux (system flux) | 565 lm |
| Luminous flux tolerance | +/-10% |
| Initial LED luminaire efficacy | 47 lm/W |
| Init. Corr. Color Temperature | 3000 K |
| Init. Color Rendering Index | 80 |
| Initial input power | 12 W |
| Power consumption tolerance | +/-10% |

Application conditions

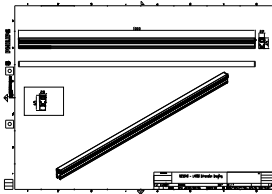
| | |
|---------------------------|---------------|
| Ambient temperature range | -40 to +50 °C |
|---------------------------|---------------|

Product data

| | |
|---------------------------------|------------------------------|
| Full product code | 911401778862 |
| Order product name | BCS340 48LED 30K 24V OC L100 |
| Order code | 911401778862 |
| Numerator - Quantity Per Pack | 1 |
| Numerator - Packs per outer box | 24 |
| Material Nr. (12NC) | 911401778862 |
| Copy Net Weight (Piece) | 0.749 kg |



Dimensional drawing



BCS340 48LED 30K 24V OC L100

