



# UniBar

## BCS341 30LED 40K 24V OC L50

UniBar - 390 lm - 7.5 W - 4000 K

UniBar is a surface mounted, exterior-rated and slim sized linear LED direct view luminaire that is designed for façade and outdoor architectural lighting applications. The robust mechanical and unique optical design make it ideal for buildings facades, media facades, bridges, overpasses and any application that requires a slim linear direct view lighting solution. Direct view spread lens, through wiring for end-to-end connection and DMX control option available with up to 10 pixels (10IDs) to give architects and designers the freedom to explore a wide range of concepts and design with no limitations. Available in white, monochromatic colors, RGB, RGBW and tunable white.

### Product data

General information		Controls and dimming	
Light source color	Neutral white	Dimmable	No
Driver included	No		
Optical cover/lens type	Opal	Mechanical and housing	
Control interface	-	Housing Material	Aluminum extruded
Connection	2 Push-in connector 2-pole	Optical cover/lens material	Polycarbonate
Cable	2 cables (0.2m input + 0.1m output) with connectors 2-pole	Overall length	500 mm
Protection class IEC	Safety class III	Overall width	35 mm
CE mark	CE mark	Overall height	65 mm
		Color	Silver
Operating and electrical		Approval and application	
Input Voltage	24 DC V	Ingress protection code	IP66 [ Dust penetration-protected, jet-proof]
Input Frequency	- Hz	Mech. impact protection code	IK08 [ 5 J vandal-protected]
Power Factor (Min)	0.9		

## Initial performance (IEC compliant)

Initial luminous flux (system flux)	390 lm
Luminous flux tolerance	+/-10%
Initial LED luminaire efficacy	52 lm/W
Init. Corr. Color Temperature	4000 K
Init. Color Rendering Index	80
Initial input power	7.5 W
Power consumption tolerance	+/-10%

## Application conditions

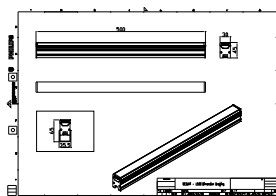
Ambient temperature range	-40 to +50 °C
---------------------------	---------------

## Product data

Full product code	911401779242
Order product name	BCS341 30LED 40K 24V OC L50
Order code	911401779242
Numerator - Quantity Per Pack	1
Numerator - Packs per outer box	48
Material Nr. (12NC)	911401779242
Copy Net Weight (Piece)	0.457 kg



## Dimensional drawing



BCS341 30LED 40K 24V OC L50

