



# UniBar

## BCS342 36LED 30K 24V OC L30

UniBar - 480 lm - 7.5 W - - K

UniBar is a surface mounted, exterior-rated and slim sized linear LED direct view luminaire that is designed for façade and outdoor architectural lighting applications. The robust mechanical and unique optical design make it ideal for buildings facades, media facades, bridges, overpasses and any application that requires a slim linear direct view lighting solution. Direct view spread lens, through wiring for end-to-end connection and DMX control option available with up to 10 pixels (10IDs) to give architects and designers the freedom to explore a wide range of concepts and design with no limitations. Available in white, monochromatic colors, RGB, RGBW and tunable white.

### Product data

General information		Controls and dimming	
Light source color	Warm white	Dimmable	No
Driver included	No		
Optical cover/lens type	Opal	Mechanical and housing	
Control interface	-	Housing Material	Aluminum extruded
Connection	2 Push-in connector 2-pole	Optical cover/lens material	Polycarbonate
Cable	2 cables 0.15m with connectors 2-pole	Overall length	300 mm
Protection class IEC	Safety class III	Overall width	57.2 mm
CE mark	CE mark	Overall height	60 mm
		Color	Silver
Operating and electrical		Approval and application	
Input Voltage	24 DC V	Ingress protection code	IP66 [ Dust penetration-protected, jet-proof]
Input Frequency	- Hz	Mech. impact protection code	IK08 [ 5 J vandal-protected]
Power Factor (Min)	0.9		

## Initial performance (IEC compliant)

Initial luminous flux (system flux)	480 lm
Luminous flux tolerance	+/-10%
Initial LED luminaire efficacy	64 lm/W
Init. Corr. Color Temperature	- K
Init. Color Rendering Index	80
Initial input power	7.5 W
Power consumption tolerance	+/-10%

## Application conditions

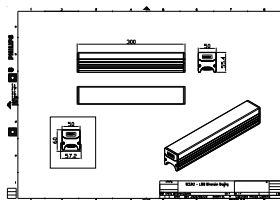
Ambient temperature range	-40 to +50 °C
---------------------------	---------------

## Product data

Full product code	871951453712599
Order product name	BCS342 36LED 30K 24V OC L30
EAN/UPC - Product	8719514537125
Order code	911401704253
Numerator - Quantity Per Pack	1
Numerator - Packs per outer box	32
Material Nr. (12NC)	911401704253
Net Weight (Piece)	0.400 kg



## Dimensional drawing



BCS342 36LED 30K 24V OC L30

