



# UniBar

## BCS342 60LED 27K 24V OC L50

UniBar - 765 lm - 12 W - 2700 K

UniBar is a surface mounted, exterior-rated and slim sized linear LED direct view luminaire that is designed for façade and outdoor architectural lighting applications. The robust mechanical and unique optical design make it ideal for buildings facades, media facades, bridges, overpasses and any application that requires a slim linear direct view lighting solution. Direct view spread lens, through wiring for end-to-end connection and DMX control option available with up to 10 pixels (10IDs) to give architects and designers the freedom to explore a wide range of concepts and design with no limitations. Available in white, monochromatic colors, RGB, RGBW and tunable white.

### Product data

General information	
Light source color	Warm white
Driver included	No
Optical cover/lens type	Opal
Control interface	-
Connection	2 Push-in connector 2-pole
Cable	2 cables 0.15m with connectors 2-pole
Protection class IEC	Safety class III
CE mark	CE mark

Operating and electrical	
Input Voltage	24 DC V
Input Frequency	- Hz
Power Factor (Min)	0.9

Controls and dimming	
Dimmable	No

Mechanical and housing	
Housing Material	Aluminum extruded
Optical cover/lens material	Polycarbonate
Overall length	500 mm
Overall width	57.2 mm
Overall height	60 mm
Color	Silver

Approval and application	
Ingress protection code	IP66 [ Dust penetration-protected, jet-proof]
Mech. impact protection code	IK08 [ 5 J vandal-protected]

## Initial performance (IEC compliant)

Initial luminous flux (system flux)	765 lm
Luminous flux tolerance	+/-10%
Initial LED luminaire efficacy	64 lm/W
Init. Corr. Color Temperature	2700 K
Init. Color Rendering Index	80
Initial input power	12 W
Power consumption tolerance	+/-10%

## Application conditions

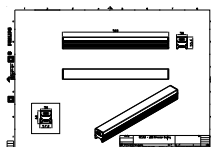
Ambient temperature range	-40 to +50 °C
---------------------------	---------------

## Product data

Full product code	871951453694499
Order product name	BCS342 60LED 27K 24V OC L50
EAN/UPC - Product	8719514536944
Order code	911401704073
Numerator - Quantity Per Pack	1
Numerator - Packs per outer box	16
Material Nr. (12NC)	911401704073
Copy Net Weight (Piece)	0.650 kg



## Dimensional drawing



BCS342 60LED 27K 24V OC L50

