



UniFlood G

BVP343 108LED 40K 220V 15x17 D3

UniFlood G - 20900 lm - 260 W - - K

UniFlood G is a giant, high power, rectangular shaped and exterior-rated architectural LED floodlight that is designed for façade, landscape and outdoor flood lighting applications. The robust mechanical design and high-efficient optical design make it ideal for illuminating high story exterior facades, bridges, landmarks and monuments. Available in white, monochromatic colors, RGB, RGBW and tunable white. Eight different spread lenses ranging from narrow spot, to wide flood and DMX512/RDM control option available to give architects and designers the freedom to explore a wide range of concepts and design with no limitations.

Product data

General information		Controls and dimming	
Light source color	Neutral white	Dimmable	No
Driver included	Yes	Mechanical and housing	
Optical cover/lens type	Tempered glass	Housing Material	Aluminum die cast
Control interface	-	Optical cover/lens material	Polymethyl methacrylate
Connection	Flying leads/wires	Effective projected area	0.6 m ²
Cable	Cable 0.5 m without plug 3-pole	Color	Dark gray
Protection class IEC	Safety class I	Approval and application	
Flammability mark	For mounting on normally flammable surfaces	Ingress protection code	IP66 [Dust penetration-protected, jet-proof]
CE mark	CE mark	Mech. impact protection code	IK09 [10 J]
Operating and electrical		Initial performance (IEC compliant)	
Input Voltage	220 to 240 V	Initial luminous flux (system flux)	20900 lm
Input Frequency	50 to 60 Hz	Luminous flux tolerance	+/-10%
Inrush current	90 A	Initial LED luminaire efficacy	80 lm/W
Power Factor (Min)	0.9		

UniFlood G

Init. Corr. Color Temperature	- K
Init. Color Rendering Index	80
Initial chromaticity	4 SDCM
Initial input power	260 W
Power consumption tolerance	+/-10%

Application conditions

Ambient temperature range	-40 to +50 °C
---------------------------	---------------

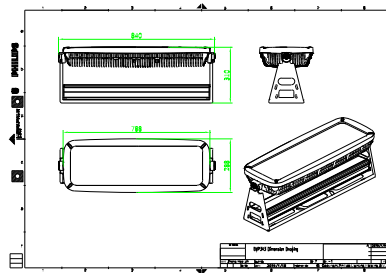
Product data

Full product code	871951453742200
-------------------	-----------------

Order product name	BVP343 108LED 40K 220V 15x17 D3
EAN/UPC - Product	8719514537422
Order code	911401729753
Numerator - Quantity Per Pack	1
Numerator - Packs per outer box	1
Material Nr. (12NC)	911401729753
Net Weight (Piece)	26.999 kg



Dimensional drawing



BVP343 108LED 40K 220V 15x17 D3

