

UniFlood G

BVP343 108LED RGB 220V 15x17 DMX D3

UniFlood G - 12927 lm - 260 W - - K

UniFlood G is a giant, high power, rectangular shaped and exterior-rated architectural LED floodlight that is designed for façade, landscape and outdoor flood lighting applications. The robust mechanical design and high-efficient optical design make it ideal for illuminating high story exterior facades, bridges, landmarks and monuments. Available in white, monochromatic colors, RGB, RGBW and tunable white. Eight different spread lenses ranging from narrow spot, to wide flood and DMX512/RDM control option available to give architects and designers the freedom to explore a wide range of concepts and design with no limitations.

Product data

General information		Power Factor (Min)		0.9	
Light source color	Red, green and blue				
Driver included	Yes				
Optical cover/lens type	Tempered glass				
Control interface	Dynamic DMX/RDM				
Connection	Flying leads/wires and 2 Push-in connector 4-pole				
Cable	Cable 0.5 m without plug 3-pole and 2 Cables 0.5 m with connector 4-pole				
Protection class IEC	Safety class I				
Flammability mark	For mounting on normally flammable surfaces				
CE mark	CE mark				
Operating and electrical		Controls and dimming			
Input Voltage	220 to 240 V	Dimmable	Yes		
Input Frequency	50 to 60 Hz				
Inrush current	90 A				
		Mechanical and housing			
		Housing Material	Aluminum die cast		
		Optical cover/lens material	Polymethyl methacrylate		
		Effective projected area	0.6 m ²		
		Color	Dark gray		
		Approval and application			
		Ingress protection code	IP66 [Dust penetration-protected, jet-proof]		
		Mech. impact protection code	IK09 [10 J]		
		Initial performance (IEC compliant)			
		Initial luminous flux (system flux)	12927 lm		

UniFlood G

Luminous flux tolerance	+/-10%
Initial LED luminaire efficacy	50 lm/W
Init. Corr. Color Temperature	- K
Init. Color Rendering Index	-
Initial chromaticity	-
Initial input power	260 W
Power consumption tolerance	+/-10%

Application conditions

Ambient temperature range	-40 to +50 °C
---------------------------	---------------

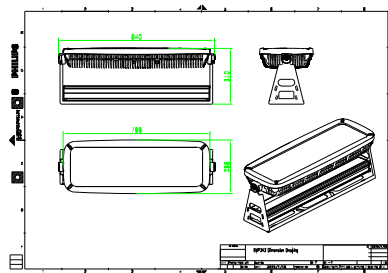
Product data

Full product code	871951453744600
-------------------	-----------------

Order product name	BVP343 108LED RGB 220V 15x17 DMX D3
EAN/UPC - Product	8719514537446
Order code	911401729773
Numerator - Quantity Per Pack	1
Numerator - Packs per outer box	1
Material Nr. (12NC)	911401729773
Net Weight (Piece)	26.999 kg



Dimensional drawing



BVP343 108LED RGB 220V 15x17 DMX D3

