



# UniFlood G

## BVP343 108LED RGBNW 220V 15x17 DMX D3

UniFlood G - 14774 lm - 260 W - - K

UniFlood G is a giant, high power, rectangular shaped and exterior-rated architectural LED floodlight that is designed for façade, landscape and outdoor flood lighting applications. The robust mechanical design and high-efficient optical design make it ideal for illuminating high story exterior facades, bridges, landmarks and monuments. Available in white, monochromatic colors, RGB, RGBW and tunable white. Eight different spread lenses ranging from narrow spot, to wide flood and DMX512/RDM control option available to give architects and designers the freedom to explore a wide range of concepts and design with no limitations.

### Product data

General information		Power Factor (Min)	
Light source color	Red, green, blue and white		0.9
Driver included	Yes	Controls and dimming	
Optical cover/lens type	Tempered glass	Dimmable	Yes
Control interface	Dynamic DMX/RDM	Mechanical and housing	
Connection	Flying leads/wires and 2 Push-in connector 4-pole	Housing Material	Aluminum die cast
Cable	Cable 0.5 m without plug 3-pole and 2 Cables 0.5 m with connector 4-pole	Optical cover/lens material	Polymethyl methacrylate
Protection class IEC	Safety class I	Effective projected area	0.6 m <sup>2</sup>
Flammability mark	For mounting on normally flammable surfaces	Color	Dark gray
CE mark	CE mark	Approval and application	
Operating and electrical		Ingress protection code	IP66 [ Dust penetration-protected, jet-proof]
Input Voltage	220 to 240 V	Mech. impact protection code	IK09 [ 10 J]
Input Frequency	50 to 60 Hz	Initial performance (IEC compliant)	
Inrush current	90 A	Initial luminous flux (system flux)	14774 lm

# UniFlood G

Luminous flux tolerance	+/-10%
Initial LED luminaire efficacy	57 lm/W
Init. Corr. Color Temperature	- K
Init. Color Rendering Index	-
Initial chromaticity	-
Initial input power	260 W
Power consumption tolerance	+/-10%

## Application conditions

Ambient temperature range	-40 to +50 °C
---------------------------	---------------

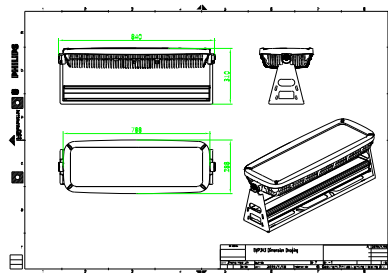
## Product data

Full product code	871951453745300
-------------------	-----------------

Order product name	BVP343 108LED RGBNW 220V 15x17 DMX D3
EAN/UPC - Product	8719514537453
Order code	911401729783
Numerator - Quantity Per Pack	1
Numerator - Packs per outer box	1
Material Nr. (12NC)	911401729783
Net Weight (Piece)	26.999 kg



## Dimensional drawing



BVP343 108LED RGBNW 220V 15x17 DMX D3

