



UniFlood G

BVP343 48LED RGBNW 220V 3 DMX D2

UniFlood G - 5482 lm - 120 W - - K

UniFlood G is a giant, high power, rectangular shaped and exterior-rated architectural LED floodlight that is designed for façade, landscape and outdoor flood lighting applications. The robust mechanical design and high-efficient optical design make it ideal for illuminating high story exterior facades, bridges, landmarks and monuments. Available in white, monochromatic colors, RGB, RGBW and tunable white. Eight different spread lenses ranging from narrow spot, to wide flood and DMX512/RDM control option available to give architects and designers the freedom to explore a wide range of concepts and design with no limitations.

Product data

General information		Power Factor (Min)		0.9
Light source color	Red, green, blue and white	Controls and dimming		
Driver included	Yes	Dimmable	Yes	
Optical cover/lens type	Tempered glass	Mechanical and housing		
Control interface	Dynamic DMX/RDM	Housing Material	Aluminum die cast	
Connection	Flying leads/wires and 2 Push-in connector 4-pole	Optical cover/lens material	Polymethyl methacrylate	
Cable	Cable 0.5 m without plug 3-pole and 2 Cables 0.5 m with connector 4-pole	Effective projected area	0.6 m ²	
Protection class IEC	Safety class I	Color	Dark gray	
Flammability mark	For mounting on normally flammable surfaces	Approval and application		
CE mark	CE mark	Ingress protection code	IP66 [Dust penetration-protected, jet-proof]	
Operating and electrical		Mech. impact protection code	IK09 [10 J]	
Input Voltage	220 to 240 V	Initial performance (IEC compliant)		
Input Frequency	50 to 60 Hz	Initial luminous flux (system flux)	5482 lm	
Inrush current	70 A			

UniFlood G

Luminous flux tolerance	+/-10%
Initial LED luminaire efficacy	46 lm/W
Init. Corr. Color Temperature	- K
Init. Color Rendering Index	-
Initial chromaticity	-
Initial input power	120 W
Power consumption tolerance	+/-10%

Application conditions

Ambient temperature range	-40 to +50 °C
---------------------------	---------------

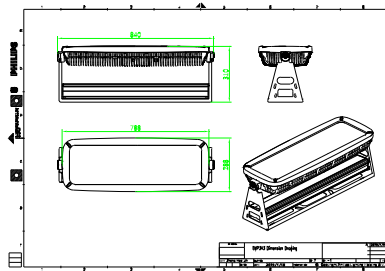
Product data

Full product code	871951453729300
-------------------	-----------------

Order product name	BVP343 48LED RGBNW 220V 3 DMX D2
EAN/UPC - Product	8719514537293
Order code	911401729623
Numerator - Quantity Per Pack	1
Numerator - Packs per outer box	1
Material Nr. (12NC)	911401729623
Net Weight (Piece)	26.999 kg



Dimensional drawing



BVP343 48LED RGBNW 220V 3 DMX D2

