

UniFlood G

BVP344 216LED 30K 220V 15x17 DMX D3

UniFlood G - 35927 lm - 520 W - - K

UniFlood G is a giant, high power, rectangular shaped and exterior-rated architectural LED floodlight that is designed for façade, landscape and outdoor flood lighting applications. The robust mechanical design and high-efficient optical design make it ideal for illuminating high story exterior facades, bridges, landmarks and monuments. Available in white, monochromatic colors, RGB, RGBW and tunable white. Eight different spread lenses ranging from narrow spot, to wide flood and DMX512/RDM control option available to give architects and designers the freedom to explore a wide range of concepts and design with no limitations.

Product data

General information	
Light source color	Warm white
Driver included	Yes
Optical cover/lens type	Tempered glass
Control interface	Dynamic DMX/RDM
Connection	Flying leads/wires and 2 Push-in connector 4-pole
Cable	Cable 0.5 m without plug 3-pole and 2 Cables 0.5 m with connector 4-pole
Protection class IEC	Safety class I
Flammability mark	For mounting on normally flammable surfaces
CE mark	CE mark
Operating and electrical	
Input Voltage	220 to 240 V
Input Frequency	50 to 60 Hz
Inrush current	180 A
Power Factor (Min)	0.9
Controls and dimming	
Dimmable	Yes
Mechanical and housing	
Housing Material	Aluminum die cast
Optical cover/lens material	Polymethyl methacrylate
Effective projected area	1.1 m ²
Color	Dark gray
Approval and application	
Ingress protection code	IP66 [Dust penetration-protected, jet-proof]
Mech. impact protection code	IK09 [10 J]
Initial performance (IEC compliant)	
Initial luminous flux (system flux)	35927 lm

UniFlood G

Luminous flux tolerance	+/-10%
Initial LED luminaire efficacy	69 lm/W
Init. Corr. Color Temperature	- K
Init. Color Rendering Index	80
Initial chromaticity	4 SDCM
Initial input power	520 W
Power consumption tolerance	+/-10%

Application conditions

Ambient temperature range	-40 to +50 °C
---------------------------	---------------

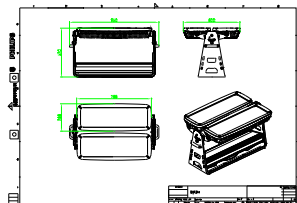
Product data

Full product code	871951453765100
-------------------	-----------------

Order product name	BVP344 216LED 30K 220V 15x17 DMX D3
EAN/UPC - Product	8719514537651
Order code	911401729983
Numerator - Quantity Per Pack	1
Numerator - Packs per outer box	1
Material Nr. (12NC)	911401729983
Net Weight (Piece)	55.999 kg



Dimensional drawing



BVP344 216LED 30K 220V 15x17 DMX D3

