



UniFlood G

BVP344 96LED 40K 220V 3 DMX D2

UniFlood G - 14895 lm - 240 W - - K

UniFlood G is a giant, high power, rectangular shaped and exterior-rated architectural LED floodlight that is designed for façade, landscape and outdoor flood lighting applications. The robust mechanical design and high-efficient optical design make it ideal for illuminating high story exterior facades, bridges, landmarks and monuments. Available in white, monochromatic colors, RGB, RGBW and tunable white. Eight different spread lenses ranging from narrow spot, to wide flood and DMX512/RDM control option available to give architects and designers the freedom to explore a wide range of concepts and design with no limitations.

Product data

General information	
Light source color	Neutral white
Driver included	Yes
Optical cover/lens type	Tempered glass
Control interface	Dynamic DMX/RDM
Connection	Flying leads/wires and 2 Push-in connector 4-pole
Cable	Cable 0.5 m without plug 3-pole and 2 Cables 0.5 m with connector 4-pole
Protection class IEC	Safety class I
Flammability mark	For mounting on normally flammable surfaces
CE mark	CE mark

Operating and electrical	
Input Voltage	220 to 240 V
Input Frequency	50 to 60 Hz
Inrush current	140 A

Power Factor (Min)	0.9
--------------------	-----

Controls and dimming	
Dimmable	Yes

Mechanical and housing	
Housing Material	Aluminum die cast
Optical cover/lens material	Polymethyl methacrylate
Effective projected area	1.1 m ²
Color	Dark gray

Approval and application	
Ingress protection code	IP66 [Dust penetration-protected, jet-proof]
Mech. impact protection code	IK09 [10 J]

Initial performance (IEC compliant)	
Initial luminous flux (system flux)	14895 lm

UniFlood G

Luminous flux tolerance	+/-10%
Initial LED luminaire efficacy	62 lm/W
Init. Corr. Color Temperature	- K
Init. Color Rendering Index	80
Initial chromaticity	4 SDCM
Initial input power	240 W
Power consumption tolerance	+/-10%

Application conditions

Ambient temperature range	-40 to +50 °C
---------------------------	---------------

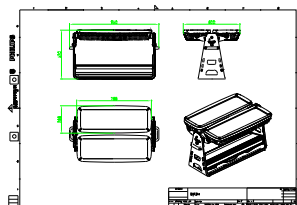
Product data

Full product code	871951453751400
-------------------	-----------------

Order product name	BVP344 96LED 40K 220V 3 DMX D2
EAN/UPC - Product	8719514537514
Order code	911401729843
Numerator - Quantity Per Pack	1
Numerator - Packs per outer box	1
Material Nr. (12NC)	911401729843
Net Weight (Piece)	55.999 kg



Dimensional drawing



BVP344 96LED 40K 220V 3 DMX D2

