



UniString

BWS301 3LED 30K 15V A LR N16P12

UniString - 51 lm - 1 W - 3000 K

UniString is a surface mounted, exterior-rated and compact sized architectural LED direct view string that is designed for architectural and media façade outdoor lighting applications.;The robust mechanical design, easy installation and unique optical lenses make UniString ideal for buildings/media facades, bridges, arenas, theaters, amusement parks and recreational centers.;Available in white, monochromatic colors, RGB, RGBW and tunable white.;Available in symmetrical and asymmetrical optical distributions with DMX control option to give architects and designers the freedom to explore a wide range of concepts and design with no limitations.

Warnings and Safety

- For outdoor use only

Product data

General information		CE mark	CE mark
Light source color	Warm white		
Light source replaceable	No		
Driver included	No		
Optical cover/lens type	Polycarbonate bowl/cover clear		
Luminaire light beam spread	85° x 110°		
Control interface	-		
Connection	Push-in connector 2-pole		
Cable	2 meters long cable with 16 nodes, 125mm pitch and 2 connectors 2-pole		
Protection class IEC	Safety class III		
Glow-wire test	Temperature 750 °C, duration 30 s		
Flammability mark	For mounting on normally flammable surfaces		
		Operating and electrical	
		Input Voltage	15 DC V
		Input Frequency	- Hz
		Power Factor (Min)	0.9
		Controls and dimming	
		Dimmable	No
		Mechanical and housing	
		Housing Material	Polycarbonate
		Optical cover/lens material	Polycarbonate

UniString

Overall length	40 mm
Overall width	15.5 mm
Overall height	57 mm
Color	Black

Approval and application

Ingress protection code	IP66 [Dust penetration-protected, jet-proof]
Mech. impact protection code	IK06 [1 J]

Initial performance (IEC compliant)

Initial luminous flux (system flux)	51 lm
Luminous flux tolerance	+/-10%
Initial LED luminaire efficacy	51 lm/W
Init. Corr. Color Temperature	3000 K
Init. Color Rendering Index	80
Initial chromaticity	4 SDCM
Initial input power	1 W

Power consumption tolerance	+/-10%
-----------------------------	--------

Application conditions

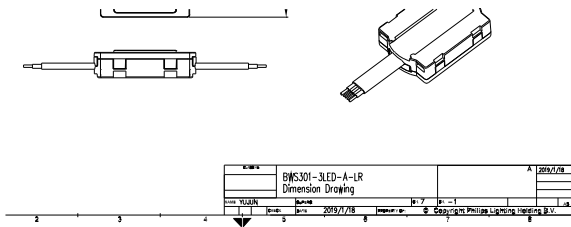
Ambient temperature range	-40 to +50 °C
---------------------------	---------------

Product data

Full product code	911401753162
Order product name	BWS301 3LED 30K 15V A LR N16P12
Order code	911401753162
Numerator - Quantity Per Pack	1
Numerator - Packs per outer box	12
Material Nr. (12NC)	911401753162
Copy Net Weight (Piece)	0.750 kg



Dimensional drawing



BWS301 3LED 30K 15V A LR N16P12

