



# UniString

## BWS302 8LED 27K 24V A LR N10P20

UniString - 126 lm - 2 W - 2700 K

UniString is a surface mounted, exterior-rated and compact sized architectural LED direct view string that is designed for architectural and media façade outdoor lighting applications.;The robust mechanical design, easy installation and unique optical lenses make UniString ideal for buildings/media facades, bridges, arenas, theaters, amusement parks and recreational centers.;Available in white, monochromatic colors, RGB, RGBW and tunable white.;Available in symmetrical and asymmetrical optical distributions with DMX control option to give architects and designers the freedom to explore a wide range of concepts and design with no limitations.

### Warnings and Safety

- For outdoor use only

### Product data

General information	
Light source color	Warm white
Light source replaceable	No
Driver included	No
Optical cover/lens type	Polycarbonate bowl/cover clear
Luminaire light beam spread	85° x 110°
Control interface	-
Connection	Push-in connector 2-pole
Cable	2 meters long cable with 10 nodes, 200mm pitch and 2 connectors 2-pole
Protection class IEC	Safety class III
Glow-wire test	Temperature 750 °C, duration 30 s
Flammability mark	For mounting on normally flammable surfaces

CE mark	CE mark
Operating and electrical	
Input Voltage	24 DC V
Input Frequency	- Hz
Power Factor (Min)	0.9
Controls and dimming	
Dimmable	No
Mechanical and housing	
Housing Material	Polycarbonate
Optical cover/lens material	Polycarbonate

# UniString

Overall length	48 mm
Overall width	15.5 mm
Overall height	60.1 mm
Color	Black

## Approval and application

Ingress protection code	IP66 [ Dust penetration-protected, jet-proof]
Mech. impact protection code	IK06 [ 1 J]

## Initial performance (IEC compliant)

Initial luminous flux (system flux)	126 lm
Luminous flux tolerance	+/-10%
Initial LED luminaire efficacy	63 lm/W
Init. Corr. Color Temperature	2700 K
Init. Color Rendering Index	80
Initial chromaticity	4 SDCM
Initial input power	2 W

Power consumption tolerance	+/-10%
-----------------------------	--------

## Application conditions

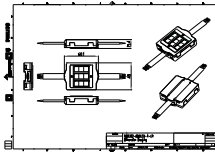
Ambient temperature range	-40 to +50 °C
---------------------------	---------------

## Product data

Full product code	911401754002
Order product name	BWS302 8LED 27K 24V A LR N10P20
Order code	911401754002
Numerator - Quantity Per Pack	1
Numerator - Packs per outer box	12
Material Nr. (12NC)	911401754002
Copy Net Weight (Piece)	0.708 kg



## Dimensional drawing



BWS302 8LED 27K 24V A LR N10P20

