



UniString

BWS302 8LED 40K 24V S N10P20

UniString - 151 lm - 2 W - 4000 K

UniString is a surface mounted, exterior-rated and compact sized architectural LED direct view string that is designed for architectural and media façade outdoor lighting applications.;The robust mechanical design, easy installation and unique optical lenses make UniString ideal for buildings/media facades, bridges, arenas, theaters, amusement parks and recreational centers.;Available in white, monochromatic colors, RGB, RGBW and tunable white.;Available in symmetrical and asymmetrical optical distributions with DMX control option to give architects and designers the freedom to explore a wide range of concepts and design with no limitations.

Warnings and Safety

- For outdoor use only

Product data

| General information | |
|-----------------------------|--|
| Light source color | Neutral white |
| Light source replaceable | No |
| Driver included | No |
| Optical cover/lens type | Polycarbonate bowl/cover clear |
| Luminaire light beam spread | 110° x 110° |
| Control interface | - |
| Connection | Push-in connector 2-pole |
| Cable | 2 meters long cable with 10 nodes, 200mm pitch and 2 connectors 2-pole |
| Protection class IEC | Safety class III |
| Glow-wire test | Temperature 750 °C, duration 30 s |
| Flammability mark | For mounting on normally flammable surfaces |

| CE mark | CE mark |
|-----------------------------|---------------|
| Operating and electrical | |
| Input Voltage | 24 DC V |
| Input Frequency | - Hz |
| Power Factor (Min) | 0.9 |
| Controls and dimming | |
| Dimmable | No |
| Mechanical and housing | |
| Housing Material | Polycarbonate |
| Optical cover/lens material | Polycarbonate |

UniString

| | |
|----------------|---------|
| Overall length | 48 mm |
| Overall width | 15.5 mm |
| Overall height | 60.1 mm |
| Color | Black |

Approval and application

| | |
|------------------------------|---|
| Ingress protection code | IP66 [Dust penetration-protected, jet-proof] |
| Mech. impact protection code | IK06 [1 J] |

Initial performance (IEC compliant)

| | |
|-------------------------------------|---------|
| Initial luminous flux (system flux) | 151 lm |
| Luminous flux tolerance | +/-10% |
| Initial LED luminaire efficacy | 76 lm/W |
| Init. Corr. Color Temperature | 4000 K |
| Init. Color Rendering Index | 80 |
| Initial chromaticity | 4 SDCM |
| Initial input power | 2 W |

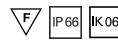
| | |
|-----------------------------|--------|
| Power consumption tolerance | +/-10% |
|-----------------------------|--------|

Application conditions

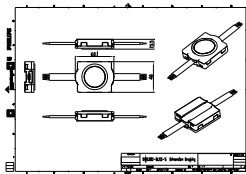
| | |
|---------------------------|---------------|
| Ambient temperature range | -40 to +50 °C |
|---------------------------|---------------|

Product data

| | |
|---------------------------------|------------------------------|
| Full product code | 911401753922 |
| Order product name | BWS302 8LED 40K 24V S N10P20 |
| Order code | 911401753922 |
| Numerator - Quantity Per Pack | 1 |
| Numerator - Packs per outer box | 12 |
| Material Nr. (12NC) | 911401753922 |
| Copy Net Weight (Piece) | 0.708 kg |



Dimensional drawing



BWS302 8LED 40K 24V S N10P20

