

Greenspace Flex

RS378B MR16 D92 R-R FX D

Accessory - Greenspace Flex

GreenSpace Flex is performance portfolio dedicated to Hospitality segment for GC/GM countries. With modular design concept, the light engines and different trims could have multiply of combination to satisfy diversified customer's requirement.

Product data

| General information | |
|--|-----------------------------------|
| Beam angle of light source | - ° |
| Light source color | - |
| Number of gear units | 1 unit |
| Driver/power unit/transformer | Electronic transformer |
| Driver included | No |
| Optic type | - |
| Optical cover/lens type | - |
| Luminaire light beam spread | - |
| Control interface | - |
| Connection | External connector |
| Cable | - |
| Protection class IEC | - |
| Glow-wire test | Temperature 600 °C, duration 30 s |
| Flammability mark | - |
| CE mark | - |
| ENEC mark | - |
| Warranty period | 3 years |
| Constant light output | No |
| Number of products on MCB of 16 A type B | - |
| EU RoHS compliant | Yes |

| Light source engine type | LED |
|-----------------------------|-------------------------|
| Operating and electrical | |
| Input Voltage | 220 to 240 V |
| Input Frequency | 50 to 60 Hz |
| Power Factor (Min) | - |
| Controls and dimming | |
| Dimmable | No |
| Mechanical and housing | |
| Housing Material | Aluminum |
| Reflector material | - |
| Optic material | Polymethyl methacrylate |
| Optical cover/lens material | - |
| Fixation material | Aluminum |
| Optical cover/lens finish | - |
| Overall length | 0 mm |
| Overall width | 0 mm |
| Overall height | 110 mm |
| Overall diameter | 105 mm |

Greenspace Flex

| | |
|--|-----------------------------|
| Color | Gray |
| Dimensions (Height x Width x Depth) | 110 x 0 x 0 mm |
| Approval and application | |
| Ingress protection code | IP20 [Finger-protected] |
| Mech. impact protection code | IK04 [0.5 J standard plus] |
| Initial performance (IEC compliant) | |
| Luminous flux tolerance | +/-10% |
| Init. Corr. Color Temperature | - K |
| Init. Color Rendering Index | - |
| Initial input power | - W |
| Power consumption tolerance | +/-10% |
| Over time performance (IEC compliant) | |
| Median useful life L80B50 | 50000 h |

Application conditions

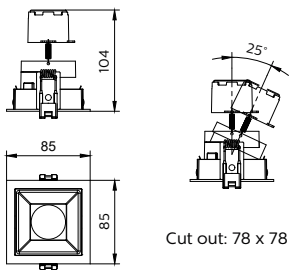
| | |
|-------------------------------|----------------|
| Ambient temperature range | -20 to +45 °C |
| Maximum dim level | Not applicable |
| Suitable for random switching | No |

Product data

| | |
|---------------------------------|--------------------------|
| Full product code | 911401720862 |
| Order product name | RS378B MR16 D92 R-R FX D |
| Order code | 911401720862 |
| Numerator - Quantity Per Pack | 1 |
| Numerator - Packs per outer box | 36 |
| Material Nr. (12NC) | 911401720862 |
| Net Weight (Piece) | 0.210 kg |



Dimensional drawing



RS378B MR16 D92 R-R FX D

