



# UniDot G2

## BGS300 G2 12LEDLP 27K 24V DSC DMX

UniDot G2 - 199 lm - 3 W - 2700 K

UniDot G2 is a surface mounted, exterior-rated and compact sized architectural LED direct view dot lighting luminaire that is designed for façade and outdoor lighting applications. The robust mechanical and unique optical covers make UniDot G2 ideal for building facades, bridges, theaters, amusement parks and recreational centers. Available in white, monochromatic colors, RGB, RGBW and tunable white. Three optical covers options and DMX control interface available to give architects and designers the freedom to explore a wide range of concepts and design with no limitations.

### Product data

General information	
Light source color	Warm white
Light source replaceable	No
Driver/power unit/transformer	Power supply unit external
Driver included	No
Optical cover/lens type	Polycarbonate bowl/cover spherical
Control interface	Dynamix DMX
Connection	2 Push-in connector 5-pole
Cable	2 cables 0.3m with connector 5-pole
Protection class IEC	Safety class III
Flammability mark	For mounting on normally flammable surfaces
CE mark	CE mark
Light source engine type	LED
Serviceability class	Class B, luminaire is equipped with some serviceable parts (when applicable): driver, control units, surge protection device, front cover and mechanical parts

Light technical	
Standard tilt angle posttop	-
Standard tilt angle side entry	-
Operating and electrical	
Input Voltage	24 DC V
Input Frequency	- Hz
Power Factor (Min)	0.9
Controls and dimming	
Dimmable	Yes
Mechanical and housing	
Housing Material	Aluminum die cast
Optical cover/lens material	Polycarbonate
Mounting device	-
Optical cover/lens shape	Hemispherical

## UniDot G2

Optical cover/lens finish	Diamond
Overall length	78 mm
Overall width	72 mm
Overall height	57 mm
Overall diameter	72 mm
Color	Dark gray

### Approval and application

Ingress protection code	IP66 [ Dust penetration-protected, jet-proof]
Mech. impact protection code	IK06 [ 1 J]

### Initial performance (IEC compliant)

Initial luminous flux (system flux)	199 lm
Luminous flux tolerance	+/-10%
Initial LED luminaire efficacy	66 lm/W
Init. Corr. Color Temperature	2700 K
Init. Color Rendering Index	80
Initial chromaticity	4 SDCM
Initial input power	3 W

Power consumption tolerance	+/-10%
-----------------------------	--------

### Application conditions

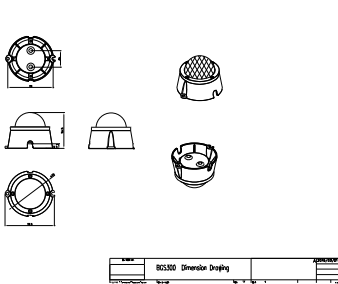
Ambient temperature range	-40 to +50 °C
Maximum dim level	1%

### Product data

Full product code	871951494537199
Order product name	BGS300 G2 12LEDLP 27K 24V DSC DMX
EAN/UPC - Product	8719514945371
Order code	911401752252
Numerator - Quantity Per Pack	1
Numerator - Packs per outer box	48
Material Nr. (12NC)	911401752252
Net Weight (Piece)	0.212 kg



## Dimensional drawing



BGS300 G2 12LEDLP 27K 24V DSC DMX

