



UniDot G2

BGS302 G2 9LED 40K 24V CFC DMX

UniDot G2 - 741 lm - 9 W - 4000 K

UniDot G2 is a surface mounted, exterior-rated and compact sized architectural LED direct view dot lighting luminaire that is designed for façade and outdoor lighting applications. The robust mechanical and unique optical covers make UniDot G2 ideal for building facades, bridges, theaters, amusement parks and recreational centers. Available in white, monochromatic colors, RGB, RGBW and tunable white. Three optical covers options and DMX control interface available to give architects and designers the freedom to explore a wide range of concepts and design with no limitations.

Product data

General information	
Light source color	Neutral white
Light source replaceable	No
Driver/power unit/transformer	Power supply unit external
Driver included	No
Optical cover/lens type	Polycarbonate bowl/cover flat
Luminaire light beam spread	110°
Control interface	Dynamix DMX
Connection	2 Push-in connector 5-pole
Cable	2 cables 0.3m with connector 5-pole
Protection class IEC	Safety class III
Flammability mark	For mounting on normally flammable surfaces
CE mark	CE mark
Light source engine type	LED

Serviceability class	Class B, luminaire is equipped with some serviceable parts (when applicable): driver, control units, surge protection device, front cover and mechanical parts
----------------------	--

Light technical	
Standard tilt angle posttop	-
Standard tilt angle side entry	-

Operating and electrical	
Input Voltage	24 DC V
Input Frequency	- Hz
Power Factor (Min)	0.9

Controls and dimming	
Dimmable	Yes

UniDot G2

Mechanical and housing

Housing Material	Aluminum die cast
Optical cover/lens material	Polycarbonate
Mounting device	-
Optical cover/lens shape	Flat
Optical cover/lens finish	Clear
Overall length	136 mm
Overall width	124 mm
Overall height	43 mm
Overall diameter	124 mm
Color	Dark gray

Approval and application

Ingress protection code	IP66 [Dust penetration-protected, jet-proof]
Mech. impact protection code	IK06 [1 J]

Initial performance (IEC compliant)

Initial luminous flux (system flux)	741 lm
Luminous flux tolerance	+/-10%
Initial LED luminaire efficacy	82 lm/W
Init. Corr. Color Temperature	4000 K

Init. Color Rendering Index	80
Initial chromaticity	4 SDCM
Initial input power	9 W
Power consumption tolerance	+/-10%

Application conditions

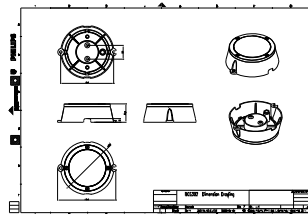
Ambient temperature range	-40 to +50 °C
Maximum dim level	1%

Product data

Full product code	871951494571599
Order product name	BGS302 G2 9LED 40K 24V CFC DMX
EAN/UPC - Product	8719514945715
Order code	911401752812
Numerator - Quantity Per Pack	1
Numerator - Packs per outer box	18
Material Nr. (12NC)	911401752812
Copy Net Weight (Piece)	0.388 kg



Dimensional drawing



BGS302 G2 9LED 40K 24V CFC DMX

