



# UniFlood C

## BVP322 18LED 27K 220V 45 D2

UniFlood C - 2750 lm - 36 W - 2700 K

UniFlood C is a circular shaped, exterior-rated and cost-effective architectural LED floodlight that is designed for façade, landscape and outdoor flood lighting applications. The robust mechanical design and high-efficiency optical design make it ideal for illuminating multi-story exterior facades, bridges, landmarks and monuments. Available in white, monochromatic colors, RGB, RGBW and tunable white. Six different spread lenses ranging from narrow spot to wide flood and DMX512/RDM control option available to give architects and designers the freedom to explore a wide range of concepts and design with no limitations.

### Warnings and Safety

- For outdoor use only

### Product data

General information		Inrush current	
Light source color	Warm white	Inrush current	40 A
Driver included	Yes	Power Factor (Min)	0.9
Optical cover/lens type	Tempered glass	<b>Controls and dimming</b>	
Control interface	-	Dimmable	No
Connection	Flying leads/wires	<b>Mechanical and housing</b>	
Cable	Cable 0.5 m without plug 3-pole	Housing Material	Aluminum die cast
Protection class IEC	Safety class I	Optical cover/lens material	Polymethyl methacrylate
Flammability mark	For mounting on normally flammable surfaces	Effective projected area	0.038 m <sup>2</sup>
CE mark	CE mark	Color	Dark gray
<b>Operating and electrical</b>		<b>Approval and application</b>	
Input Voltage	220 to 240 V	Ingress protection code	IP66 [ Dust penetration-protected, jet-proof]
Input Frequency	50 to 60 Hz		

# UniFlood C

Mech. impact protection code IK08 [ 5 J vandal-protected]

## Initial performance (IEC compliant)

Initial luminous flux (system flux)	2750 lm
Luminous flux tolerance	+/-10%
Initial LED luminaire efficacy	76 lm/W
Init. Corr. Color Temperature	2700 K
Init. Color Rendering Index	80
Initial chromaticity	SDCM = 4
Initial input power	36 W
Power consumption tolerance	+/-10%

## Application conditions

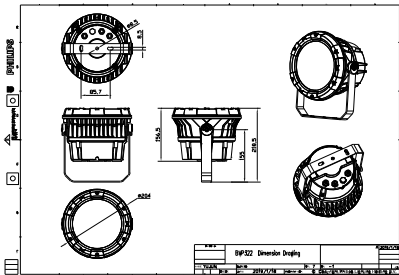
Ambient temperature range -40 to +50 °C

## Product data

Full product code	871951453866599
Order product name	BVP322 18LED 27K 220V 45 D2
EAN/UPC - Product	8719514538665
Order code	911401730993
Numerator - Quantity Per Pack	1
Numerator - Packs per outer box	2
Material Nr. (12NC)	911401730993
Net Weight (Piece)	4.099 kg



## Dimensional drawing



BVP322 18LED 27K 220V 45 D2

