



UniFlood C

BVP322 18LED 27K 220V 45 DMX D2

UniFlood C - 2750 lm - 36 W - 2700 K

UniFlood C is a circular shaped, exterior-rated and cost-effective architectural LED floodlight that is designed for façade, landscape and outdoor flood lighting applications. The robust mechanical design and high-efficiency optical design make it ideal for illuminating multi-story exterior facades, bridges, landmarks and monuments. Available in white, monochromatic colors, RGB, RGBW and tunable white. Six different spread lenses ranging from narrow spot to wide flood and DMX512/RDM control option available to give architects and designers the freedom to explore a wide range of concepts and design with no limitations.

Warnings and Safety

- For outdoor use only

Product data

General information		Input Frequency	
Light source color	Warm white	Input Frequency	50 to 60 Hz
Driver included	Yes	Inrush current	40 A
Optical cover/lens type	Tempered glass	Power Factor (Min)	0.9
Control interface	Dynamic DMX/RDM	Controls and dimming	
Connection	Flying leads/wires and 2 Push-in connector 4-pole	Dimmable	Yes
Cable	Cable 0.5 m without plug 3-pole and 2 Cables 0.5 m with connector 4-pole	Mechanical and housing	
Protection class IEC	Safety class I	Housing Material	Aluminum die cast
Flammability mark	For mounting on normally flammable surfaces	Optical cover/lens material	Polymethyl methacrylate
CE mark	CE mark	Effective projected area	0.038 m ²
		Color	Dark gray
Operating and electrical			
Input Voltage	220 to 240 V		

UniFlood C

Approval and application

Ingress protection code	IP66 [Dust penetration-protected, jet-proof]
Mech. impact protection code	IK08 [5 J vandal-protected]

Initial performance (IEC compliant)

Initial luminous flux (system flux)	2750 lm
Luminous flux tolerance	+/-10%
Initial LED luminaire efficacy	76 lm/W
Init. Corr. Color Temperature	2700 K
Init. Color Rendering Index	80
Initial chromaticity	SDCM = 4
Initial input power	36 W
Power consumption tolerance	+/-10%

Application conditions

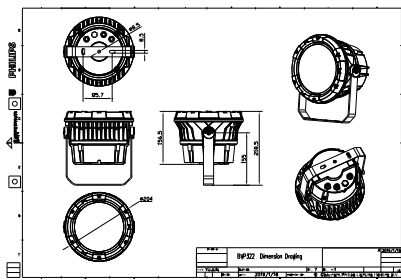
Ambient temperature range	-40 to +50 °C
---------------------------	---------------

Product data

Full product code	871951453867299
Order product name	BVP322 18LED 27K 220V 45 DMX D2
EAN/UPC - Product	8719514538672
Order code	911401731003
Numerator - Quantity Per Pack	1
Numerator - Packs per outer box	2
Material Nr. (12NC)	911401731003
Net Weight (Piece)	4.099 kg



Dimensional drawing



BVP322 18LED 27K 220V 45 DMX D2

