



# UniFlood C

## BVP322 18LED 30K 220V 15 D2

UniFlood C - 2870 lm - 36 W - 3000 K

UniFlood C is a circular shaped, exterior-rated and cost-effective architectural LED floodlight that is designed for façade, landscape and outdoor flood lighting applications. The robust mechanical design and high-efficiency optical design make it ideal for illuminating multi-story exterior facades, bridges, landmarks and monuments. Available in white, monochromatic colors, RGB, RGBW and tunable white. Six different spread lenses ranging from narrow spot to wide flood and DMX512/RDM control option available to give architects and designers the freedom to explore a wide range of concepts and design with no limitations.

### Warnings and Safety

- For outdoor use only

### Product data

General information		Inrush current	
Light source color	Warm white	Inrush current	40 A
Driver included	Yes	Power Factor (Min)	0.9
Optical cover/lens type	Tempered glass	Controls and dimming	
Control interface	-	Dimmable	No
Connection	Flying leads/wires	Mechanical and housing	
Cable	Cable 0.5 m without plug 3-pole	Housing Material	Aluminum die cast
Protection class IEC	Safety class I	Optical cover/lens material	Polymethyl methacrylate
Flammability mark	For mounting on normally flammable surfaces	Effective projected area	0.038 m <sup>2</sup>
CE mark	CE mark	Color	Dark gray
Operating and electrical		Approval and application	
Input Voltage	220 to 240 V	Ingress protection code	IP66 [ Dust penetration-protected, jet-proof]
Input Frequency	50 to 60 Hz		

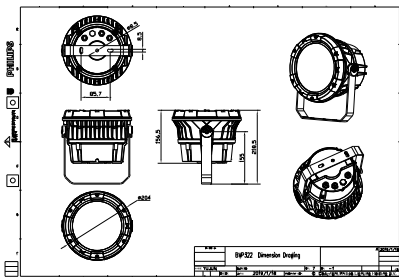
# UniFlood C

<b>Mech. impact protection code</b>	IK08 [ 5 J vandal-protected]
<b>Initial performance (IEC compliant)</b>	
<b>Initial luminous flux (system flux)</b>	2870 lm
<b>Luminous flux tolerance</b>	+/-10%
<b>Initial LED luminaire efficacy</b>	80 lm/W
<b>Init. Corr. Color Temperature</b>	3000 K
<b>Init. Color Rendering Index</b>	80
<b>Initial chromaticity</b>	SDCM = 4
<b>Initial input power</b>	36 W
<b>Power consumption tolerance</b>	+/-10%
<b>Application conditions</b>	
<b>Ambient temperature range</b>	-40 to +50 °C

<b>Product data</b>	
<b>Full product code</b>	871951453870299
<b>Order product name</b>	BVP322 18LED 30K 220V 15 D2
<b>EAN/UPC - Product</b>	8719514538702
<b>Order code</b>	911401731033
<b>Numerator - Quantity Per Pack</b>	1
<b>Numerator - Packs per outer box</b>	2
<b>Material Nr. (12NC)</b>	911401731033
<b>Net Weight (Piece)</b>	4.099 kg



## Dimensional drawing



BVP322 18LED 30K 220V 15 D2

