



UniFlood C

BVP323 24LED 27K 220V 30 D2

UniFlood C - 3670 lm - 50 W - 2700 K

UniFlood C is a circular shaped, exterior-rated and cost-effective architectural LED floodlight that is designed for façade, landscape and outdoor flood lighting applications. The robust mechanical design and high-efficiency optical design make it ideal for illuminating multi-story exterior facades, bridges, landmarks and monuments. Available in white, monochromatic colors, RGB, RGBW and tunable white. Six different spread lenses ranging from narrow spot to wide flood and DMX512/RDM control option available to give architects and designers the freedom to explore a wide range of concepts and design with no limitations.

Warnings and Safety

- For outdoor use only

Product data

| General information | |
|--------------------------|---|
| Light source color | Warm white |
| Driver included | Yes |
| Optical cover/lens type | Tempered glass |
| Control interface | - |
| Connection | Flying leads/wires |
| Cable | Cable 0.5 m without plug 3-pole |
| Protection class IEC | Safety class I |
| Flammability mark | For mounting on normally flammable surfaces |
| CE mark | CE mark |
| Operating and electrical | |
| Input Voltage | 220 to 240 V |
| Input Frequency | 50 to 60 Hz |

| Inrush current | 60 A |
|-----------------------------|---|
| Power Factor (Min) | 0.9 |
| Controls and dimming | |
| Dimmable | No |
| Mechanical and housing | |
| Housing Material | Aluminum die cast |
| Optical cover/lens material | Polymethyl methacrylate |
| Effective projected area | 0.055 m ² |
| Color | Dark gray |
| Approval and application | |
| Ingress protection code | IP66 [Dust penetration-protected, jet-proof] |

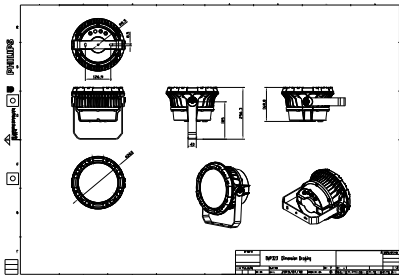
UniFlood C

| | |
|--|------------------------------|
| Mech. impact protection code | IK08 [5 J vandal-protected] |
| Initial performance (IEC compliant) | |
| Initial luminous flux (system flux) | 3670 lm |
| Luminous flux tolerance | +/-10% |
| Initial LED luminaire efficacy | 73 lm/W |
| Init. Corr. Color Temperature | 2700 K |
| Init. Color Rendering Index | 80 |
| Initial chromaticity | SDCM = 4 |
| Initial input power | 50 W |
| Power consumption tolerance | +/-10% |
| Application conditions | |
| Ambient temperature range | -40 to +50 °C |

| | |
|---------------------------------|-----------------------------|
| Product data | |
| Full product code | 871951453896299 |
| Order product name | BVP323 24LED 27K 220V 30 D2 |
| EAN/UPC - Product | 8719514538962 |
| Order code | 911401731293 |
| Numerator - Quantity Per Pack | 1 |
| Numerator - Packs per outer box | 2 |
| Material Nr. (12NC) | 911401731293 |
| Copy Net Weight (Piece) | 5.199 kg |



Dimensional drawing



BVP323 24LED 27K 220V 30 D2

