



UniFlood C

BVP323 24LED RGB 220V 10 DMX D2

UniFlood C - 2070 lm - 50 W - -

UniFlood C is a circular shaped, exterior-rated and cost-effective architectural LED floodlight that is designed for façade, landscape and outdoor flood lighting applications. The robust mechanical design and high-efficiency optical design make it ideal for illuminating multi-story exterior facades, bridges, landmarks and monuments. Available in white, monochromatic colors, RGB, RGBW and tunable white. Six different spread lenses ranging from narrow spot to wide flood and DMX512/RDM control option available to give architects and designers the freedom to explore a wide range of concepts and design with no limitations.

Warnings and Safety

- For outdoor use only

Product data

| General information | | Input Frequency | |
|--------------------------|--|-----------------------------|-------------------------|
| Light source color | Red, green and blue | Input Frequency | 50 to 60 Hz |
| Driver included | Yes | Inrush current | 60 A |
| Optical cover/lens type | Tempered glass | Power Factor (Min) | 0.9 |
| Control interface | Dynamic DMX/RDM | Controls and dimming | |
| Connection | Flying leads/wires and 2 Push-in connector 4-pole | Dimmable | Yes |
| Cable | Cable 0.5 m without plug 3-pole and 2 Cables 0.5 m with connector 4-pole | Mechanical and housing | |
| Protection class IEC | Safety class I | Housing Material | Aluminum die cast |
| Flammability mark | For mounting on normally flammable surfaces | Optical cover/lens material | Polymethyl methacrylate |
| CE mark | CE mark | Effective projected area | 0.055 m ² |
| | | Color | Dark gray |
| Operating and electrical | | | |
| Input Voltage | 220 to 240 V | | |

UniFlood C

Approval and application

| | |
|------------------------------|---|
| Ingress protection code | IP66 [Dust penetration-protected, jet-proof] |
| Mech. impact protection code | IK08 [5 J vandal-protected] |

Initial performance (IEC compliant)

| | |
|-------------------------------------|---------|
| Initial luminous flux (system flux) | 2070 lm |
| Luminous flux tolerance | +/-10% |
| Initial LED luminaire efficacy | 41 lm/W |
| Init. Corr. Color Temperature | - |
| Init. Color Rendering Index | - |
| Initial input power | 50 W |
| Power consumption tolerance | +/-10% |

Application conditions

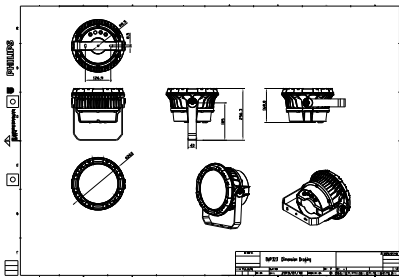
| | |
|---------------------------|---------------|
| Ambient temperature range | -40 to +50 °C |
|---------------------------|---------------|

Product data

| | |
|---------------------------------|---------------------------------|
| Full product code | 871951453916799 |
| Order product name | BVP323 24LED RGB 220V 10 DMX D2 |
| EAN/UPC - Product | 8719514539167 |
| Order code | 911401731493 |
| Numerator - Quantity Per Pack | 1 |
| Numerator - Packs per outer box | 2 |
| Material Nr. (12NC) | 911401731493 |
| Net Weight (Piece) | 5.199 kg |



Dimensional drawing



BVP323 24LED RGB 220V 10 DMX D2

