



UniFlood C

BVP324 72LED 27K 220V 10 D2

UniFlood C - 10980 lm - 150 W - 2700 K

UniFlood C is a circular shaped, exterior-rated and cost-effective architectural LED floodlight that is designed for façade, landscape and outdoor flood lighting applications. The robust mechanical design and high-efficiency optical design make it ideal for illuminating multi-story exterior facades, bridges, landmarks and monuments. Available in white, monochromatic colors, RGB, RGBW and tunable white. Six different spread lenses ranging from narrow spot to wide flood and DMX512/RDM control option available to give architects and designers the freedom to explore a wide range of concepts and design with no limitations.

Warnings and Safety

- For outdoor use only

Product data

General information		Inrush current	
Light source color	Warm white	Inrush current	65 A
Driver included	Yes	Power Factor (Min)	0.9
Optical cover/lens type	Tempered glass	Controls and dimming	
Control interface	-	Dimmable	No
Connection	Flying leads/wires	Mechanical and housing	
Cable	Cable 0.5 m without plug 3-pole	Housing Material	Aluminum die cast
Protection class IEC	Safety class I	Optical cover/lens material	Polymethyl methacrylate
Flammability mark	For mounting on normally flammable surfaces	Effective projected area	0.086 m ²
CE mark	CE mark	Color	Dark gray
Operating and electrical		Approval and application	
Input Voltage	220 to 240 V	Ingress protection code	IP66 [Dust penetration-protected, jet-proof]
Input Frequency	50 to 60 Hz		

UniFlood C

Mech. impact protection code IK08 [5 J vandal-protected]

Initial performance (IEC compliant)

Initial luminous flux (system flux)	10980 lm
Luminous flux tolerance	+/-10%
Initial LED luminaire efficacy	73 lm/W
Init. Corr. Color Temperature	2700 K
Init. Color Rendering Index	80
Initial chromaticity	SDCM = 4
Initial input power	150 W
Power consumption tolerance	+/-10%

Application conditions

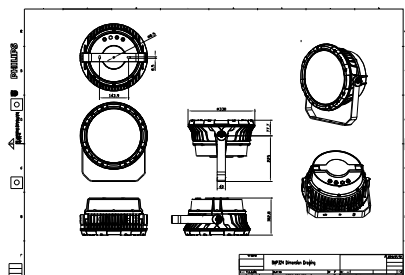
Ambient temperature range -40 to +50 °C

Product data

Full product code	871951453988400
Order product name	BVP324 72LED 27K 220V 10 D2
EAN/UPC - Product	8719514539884
Order code	911401732213
Numerator - Quantity Per Pack	1
Numerator - Packs per outer box	1
Material Nr. (12NC)	911401732213
Net Weight (Piece)	10.399 kg



Dimensional drawing



BVP324 72LED 27K 220V 10 D2

