



# UniFlood C

## BVP324 72LED 27K 220V 30 D2

UniFlood C - 12050 lm - 150 W - 2700 K

UniFlood C is a circular shaped, exterior-rated and cost-effective architectural LED floodlight that is designed for façade, landscape and outdoor flood lighting applications. The robust mechanical design and high-efficiency optical design make it ideal for illuminating multi-story exterior facades, bridges, landmarks and monuments. Available in white, monochromatic colors, RGB, RGBW and tunable white. Six different spread lenses ranging from narrow spot to wide flood and DMX512/RDM control option available to give architects and designers the freedom to explore a wide range of concepts and design with no limitations.

### Warnings and Safety

- For outdoor use only

### Product data

| General information      |   |
|--------------------------|---|
| Light source color       | Warm white                                  |
| Driver included          | Yes   |
| Optical cover/lens type  | Tempered glass                              |
| Control interface        | -   |
| Connection               | Flying leads/wires                          |
| Cable                    | Cable 0.5 m without plug 3-pole             |
| Protection class IEC     | Safety class I                              |
| Flammability mark        | For mounting on normally flammable surfaces |
| CE mark                  | CE mark                                     |
| Operating and electrical |   |
| Input Voltage            | 220 to 240 V                                |
| Input Frequency          | 50 to 60 Hz                                 |

| Inrush current              | 65 A  |
|-----------------------------|---|
| Power Factor (Min)          | 0.9   |
| Controls and dimming        |   |
| Dimmable                    | No  |
| Mechanical and housing      |   |
| Housing Material            | Aluminum die cast                             |
| Optical cover/lens material | Polymethyl methacrylate                       |
| Effective projected area    | 0.086 m <sup>2</sup>                          |
| Color                       | Dark gray                                     |
| Approval and application    |   |
| Ingress protection code     | IP66 [ Dust penetration-protected, jet-proof] |

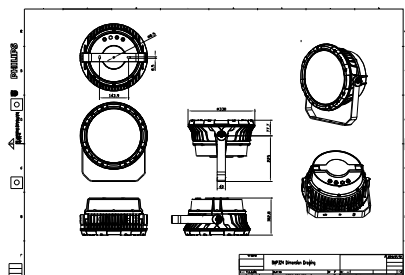
# UniFlood C

|  |                              |
|--|------------------------------|
| Mech. impact protection code               | IK08 [ 5 J vandal-protected] |
| <b>Initial performance (IEC compliant)</b> |                              |
| Initial luminous flux (system flux)        | 12050 lm                     |
| Luminous flux tolerance                    | +/-10%                       |
| Initial LED luminaire efficacy             | 80 lm/W                      |
| Init. Corr. Color Temperature              | 2700 K                       |
| Init. Color Rendering Index                | 80                           |
| Initial chromaticity                       | SDCM = 4                     |
| Initial input power                        | 150 W                        |
| Power consumption tolerance                | +/-10%                       |
| <b>Application conditions</b>              |                              |
| Ambient temperature range                  | -40 to +50 °C                |

|                                 |                             |
|---------------------------------|-----------------------------|
| <b>Product data</b>             |                             |
| Full product code               | 871951453992100             |
| Order product name              | BVP324 72LED 27K 220V 30 D2 |
| EAN/UPC - Product               | 8719514539921               |
| Order code                      | 911401732253                |
| Numerator - Quantity Per Pack   | 1                           |
| Numerator - Packs per outer box | 1                           |
| Material Nr. (12NC)             | 911401732253                |
| Net Weight (Piece)              | 10.399 kg                   |



## Dimensional drawing



BVP324 72LED 27K 220V 30 D2

