



UniFlood C

BVP324 72LED 40K 220V 10 DMX D2

UniFlood C - 12780 lm - 150 W - 4000 K

UniFlood C is a circular shaped, exterior-rated and cost-effective architectural LED floodlight that is designed for façade, landscape and outdoor flood lighting applications. The robust mechanical design and high-efficiency optical design make it ideal for illuminating multi-story exterior facades, bridges, landmarks and monuments. Available in white, monochromatic colors, RGB, RGBW and tunable white. Six different spread lenses ranging from narrow spot to wide flood and DMX512/RDM control option available to give architects and designers the freedom to explore a wide range of concepts and design with no limitations.

Warnings and Safety

- For outdoor use only

Product data

| General information | |
|-----------------------------|--|
| Light source color | Neutral white |
| Driver included | Yes |
| Optical cover/lens type | Tempered glass |
| Control interface | Dynamic DMX/RDM |
| Connection | Flying leads/wires and 2 Push-in connector 4-pole |
| Cable | Cable 0.5 m without plug 3-pole and 2 Cables 0.5 m with connector 4-pole |
| Protection class IEC | Safety class I |
| Flammability mark | For mounting on normally flammable surfaces |
| CE mark | CE mark |
| Operating and electrical | |
| Input Voltage | 220 to 240 V |
| Input Frequency | 50 to 60 Hz |
| Inrush current | 70 A |
| Power Factor (Min) | 0.9 |
| Controls and dimming | |
| Dimmable | Yes |
| Mechanical and housing | |
| Housing Material | Aluminum die cast |
| Optical cover/lens material | Polymethyl methacrylate |
| Effective projected area | 0.086 m ² |
| Color | Dark gray |

UniFlood C

Approval and application

| | |
|------------------------------|---|
| Ingress protection code | IP66 [Dust penetration-protected, jet-proof] |
| Mech. impact protection code | IK08 [5 J vandal-protected] |

Initial performance (IEC compliant)

| | |
|-------------------------------------|----------|
| Initial luminous flux (system flux) | 12780 lm |
| Luminous flux tolerance | +/-10% |
| Initial LED luminaire efficacy | 85 lm/W |
| Init. Corr. Color Temperature | 4000 K |
| Init. Color Rendering Index | 80 |
| Initial chromaticity | SDCM = 4 |
| Initial input power | 150 W |
| Power consumption tolerance | +/-10% |

Application conditions

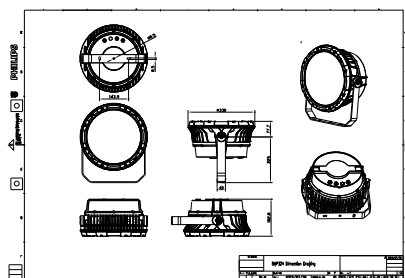
| | |
|---------------------------|---------------|
| Ambient temperature range | -40 to +50 °C |
|---------------------------|---------------|

Product data

| | |
|---------------------------------|---------------------------------|
| Full product code | 871951454005700 |
| Order product name | BVP324 72LED 40K 220V 10 DMX D2 |
| EAN/UPC - Product | 8719514540057 |
| Order code | 911401732383 |
| Numerator - Quantity Per Pack | 1 |
| Numerator - Packs per outer box | 1 |
| Material Nr. (12NC) | 911401732383 |
| Net Weight (Piece) | 10.399 kg |



Dimensional drawing



BVP324 72LED 40K 220V 10 DMX D2

