

# UniFlood C

## BVP324 72LED 40K 220V 15 D2

UniFlood C - 13400 lm - 150 W - 4000 K

UniFlood C is a circular shaped, exterior-rated and cost-effective architectural LED floodlight that is designed for façade, landscape and outdoor flood lighting applications. The robust mechanical design and high-efficiency optical design make it ideal for illuminating multi-story exterior facades, bridges, landmarks and monuments. Available in white, monochromatic colors, RGB, RGBW and tunable white. Six different spread lenses ranging from narrow spot to wide flood and DMX512/RDM control option available to give architects and designers the freedom to explore a wide range of concepts and design with no limitations.

### Warnings and Safety

- For outdoor use only

### Product data

General information		Inrush current	
Light source color	Neutral white	Inrush current	65 A
Driver included	Yes	Power Factor (Min)	0.9
Optical cover/lens type	Tempered glass	Controls and dimming	
Control interface	-	Dimmable	No
Connection	Flying leads/wires	Mechanical and housing	
Cable	Cable 0.5 m without plug 3-pole	Housing Material	Aluminum die cast
Protection class IEC	Safety class I	Optical cover/lens material	Polymethyl methacrylate
Flammability mark	For mounting on normally flammable surfaces	Effective projected area	0.086 m <sup>2</sup>
CE mark	CE mark	Color	Dark gray
Operating and electrical		Approval and application	
Input Voltage	220 to 240 V	Ingress protection code	IP66 [ Dust penetration-protected, jet-proof]
Input Frequency	50 to 60 Hz		

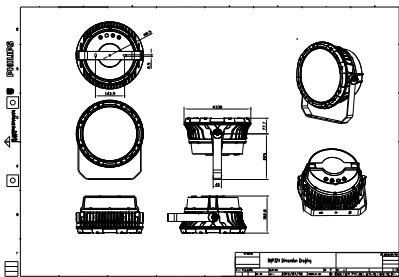
# UniFlood C

Mech. impact protection code	IK08 [ 5 J vandal-protected]
<b>Initial performance (IEC compliant)</b>	
Initial luminous flux (system flux)	13400 lm
Luminous flux tolerance	+/-10%
Initial LED luminaire efficacy	89 lm/W
Init. Corr. Color Temperature	4000 K
Init. Color Rendering Index	80
Initial chromaticity	SDCM = 4
Initial input power	150 W
Power consumption tolerance	+/-10%
<b>Application conditions</b>	
Ambient temperature range	-40 to +50 °C

<b>Product data</b>	
Full product code	871951454006400
Order product name	BVP324 72LED 40K 220V 15 D2
EAN/UPC - Product	8719514540064
Order code	911401732393
Numerator - Quantity Per Pack	1
Numerator - Packs per outer box	1
Material Nr. (12NC)	911401732393
Net Weight (Piece)	10.399 kg



## Dimensional drawing



BVP324 72LED 40K 220V 15 D2

