



# GreenSpace linear accent

**RS386B S10 P20 935 PSR-E NB WH**

Polycarbonate cover and gloss high-reflective optic -

GreenSpace Linear accent is a comprehensive product offer with multiple modules available. By means of its modular design, it offers flexible lumen output for different indoor applications, such as office, retail and hospitality. This family provides both surface mounted and recessed installations with high CRI90 and 3 different beam angles to perfectly fit the light requirement of the indoor applications. Dali and 1-10V control interfaces give the way for future system connections as well.

## Product data

General information		Controls and dimming	
Light source color	935 warm white	Dimmable	Yes
Optical cover/lens type	Polycarbonate cover and gloss high-reflective optic		
Control interface	Analog	Mechanical and housing	
Protection class IEC	Safety class II	Housing Material	Aluminum Alloy
CE mark	-	Optical cover/lens material	Polycarbonate
Number of products on MCB of 16 A type B	34	Optical cover/lens finish	Matte
Light source engine type	LED	Color	Black and white
Operating and electrical		Approval and application	
Input Voltage	220 to 240 V	Ingress protection code	IP20 [ Finger-protected]
Input Frequency	50 or 60 Hz	Mech. impact protection code	IK02 [ 0.2 J standard]
Power Factor (Min)	0.9	Initial performance (IEC compliant)	
		Initial luminous flux (system flux)	1150 lm
		Luminous flux tolerance	+/-10%

## GreenSpace linear accent

Initial LED luminaire efficacy	65 lm/W
Init. Corr. Color Temperature	3500 K
Init. Color Rendering Index	>90
Initial input power	18 W
Power consumption tolerance	+/-10%

### Application conditions

Ambient temperature range	-20 to +40 °C
---------------------------	---------------

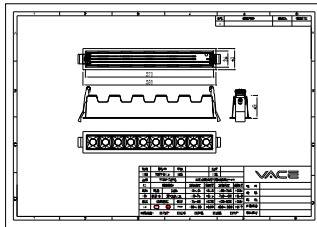
### Product data

Order product name	RS386B S10 P20 935 PSR-E NB WH
--------------------	--------------------------------

Order code	911401514702
Numerator - Quantity Per Pack	1
Numerator - Packs per outer box	10
Material Nr. (12NC)	911401514702
Copy Net Weight (Piece)	0.470 kg



## Dimensional drawing



RS386B S10 P20 935 PSR-E NB WH

